

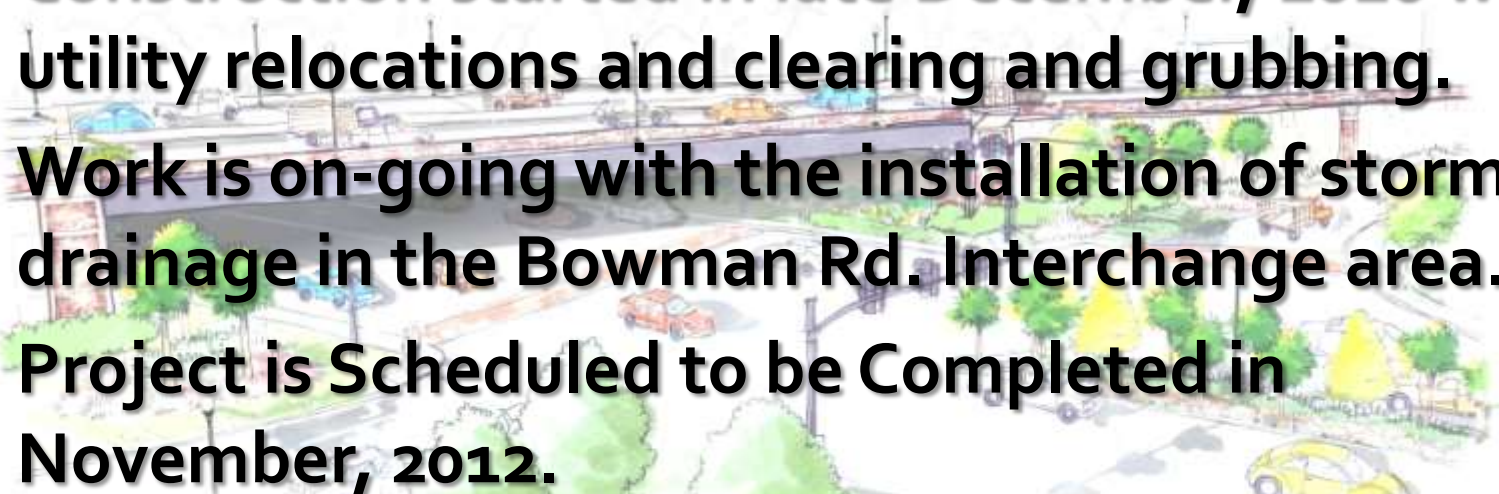
Johnnie Dodds Boulevard Improvement Project



Project Overview

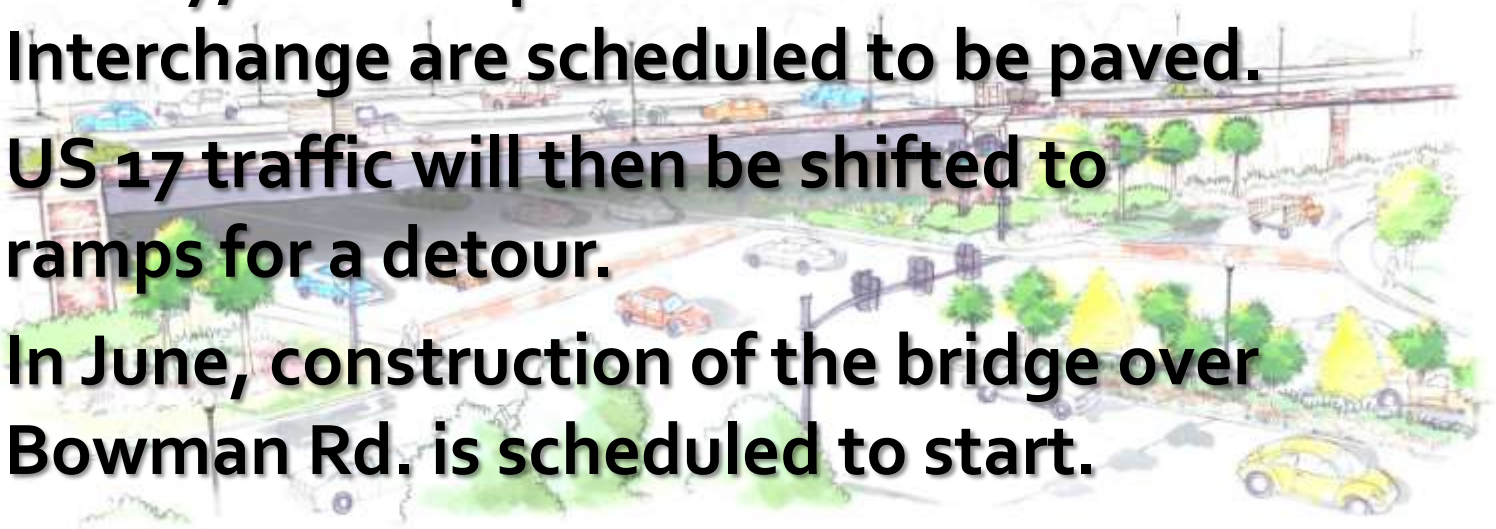
- Widening of US 17 from 2 lanes in each direction to 3 lanes in each direction from the Ravenel Bridge to just past Bowman Rd.
 - New Interchange and Bridge over Bowman Rd.
 - New Bridge over Shem Creek on Bowman Rd.
 - Landscape and pedestrian features.
- 
- A watercolor-style illustration of a highway interchange and bridge structure. The scene shows a multi-lane highway with a bridge crossing over a road. There are several trees with green and yellow foliage, and some purple flowers in the foreground. The style is soft and artistic, typical of landscape architectural renderings.

Project Update and Schedule

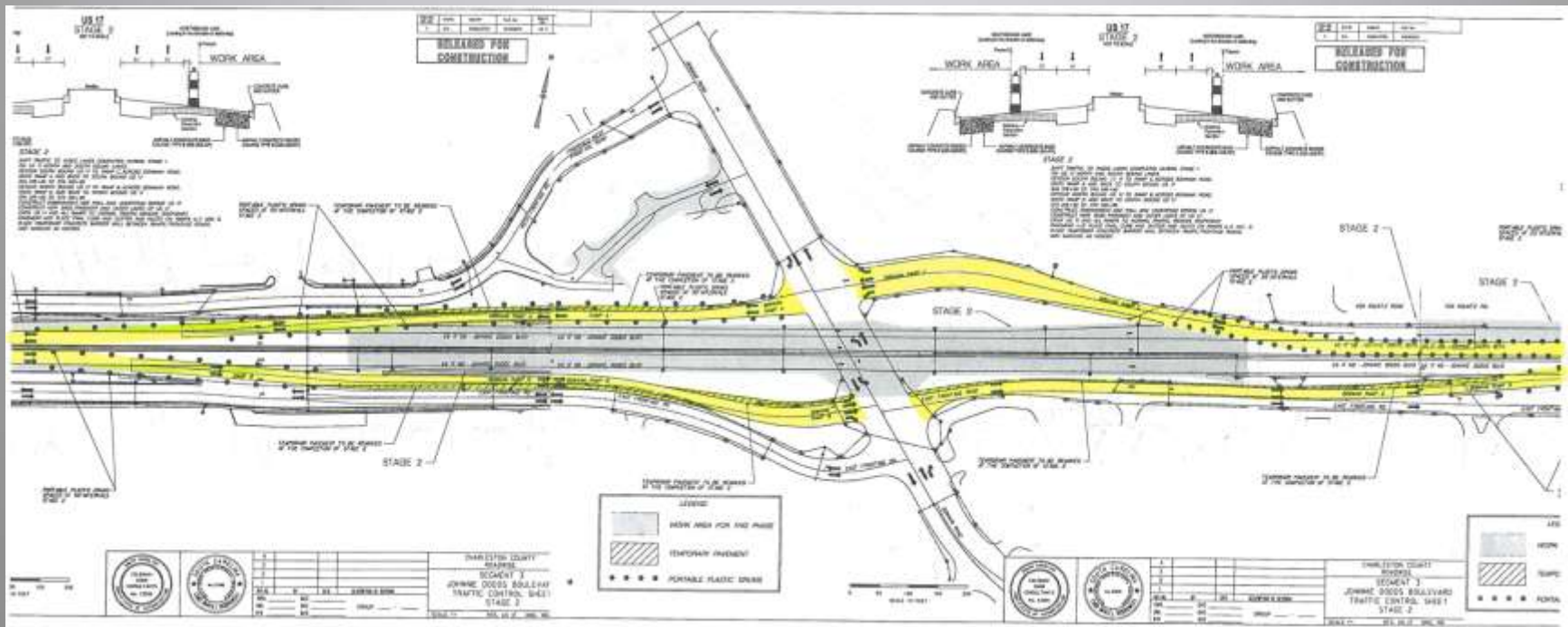
- **Project started June 28, 2010 with Design and Utility Relocation Coordination.**
 - **Construction started in late December, 2010 with utility relocations and clearing and grubbing.**
 - **Work is on-going with the installation of storm drainage in the Bowman Rd. Interchange area.**
 - **Project is Scheduled to be Completed in November, 2012.**
- 

What to Expect Over Next Few Months

- In April, construction will ramp up on the rest of the project.
- In May, the ramps for the Bowman Interchange are scheduled to be paved.
- US 17 traffic will then be shifted to ramps for a detour.
- In June, construction of the bridge over Bowman Rd. is scheduled to start.

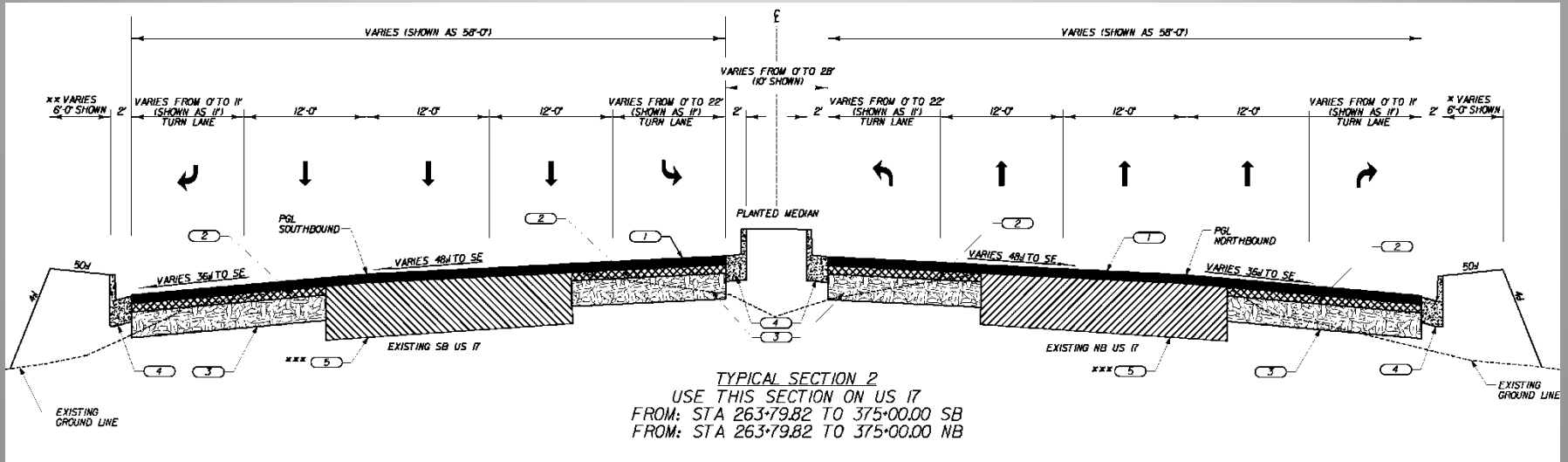


US 17 Detour at Bowman Road



Note - Two lanes of traffic to remain open during the day in both directions of US 17 during construction meaning a significant amount of night work.

Typical Roadway Section



Rendering of Bowman Interchange



An aerial photograph of a road intersection in Mount Pleasant, South Carolina. The image shows a multi-lane road with a roundabout area. Overlaid on the image are green and pink landscaping plans, including trees and flower beds. The text is in a bold, yellow, sans-serif font.

Stakeholders Update Meeting

February 22nd at 6:00 pm

Mount Pleasant Town Hall
Council Chambers Room

QUESTIONS ???

Contact Information:

US 17 Improvements Project Office

1603 Highway 17

Mount Pleasant, SC 29464

(843) 388-6243

www.ccroadwise.org