

# 2016 Sales Tax Referendum

January 19, 2017

Presented By:

Transportation Development



# Talking Points



General Funding Information – Where's the money?



Funding – Revenue vs. Expenditures



Project Delivery – From Conception to Completion



Active Projects – What's their status?



Projects to Come



Allocations and Rural Roads

# General Information



## Passed

November 6, 2016



## Collections

Begin May 2017  
and run for 25 year  
or until \$2.1 Billion  
is collected



## Receipt

Expected to  
begin November  
2017



## Distribution

Expected distribution of  
revenues:

- Approximately 10%  
Greenbelts
- Approximately 29%  
Mass Transit
- Approximately 61%  
Transportation

# Where's the Money?

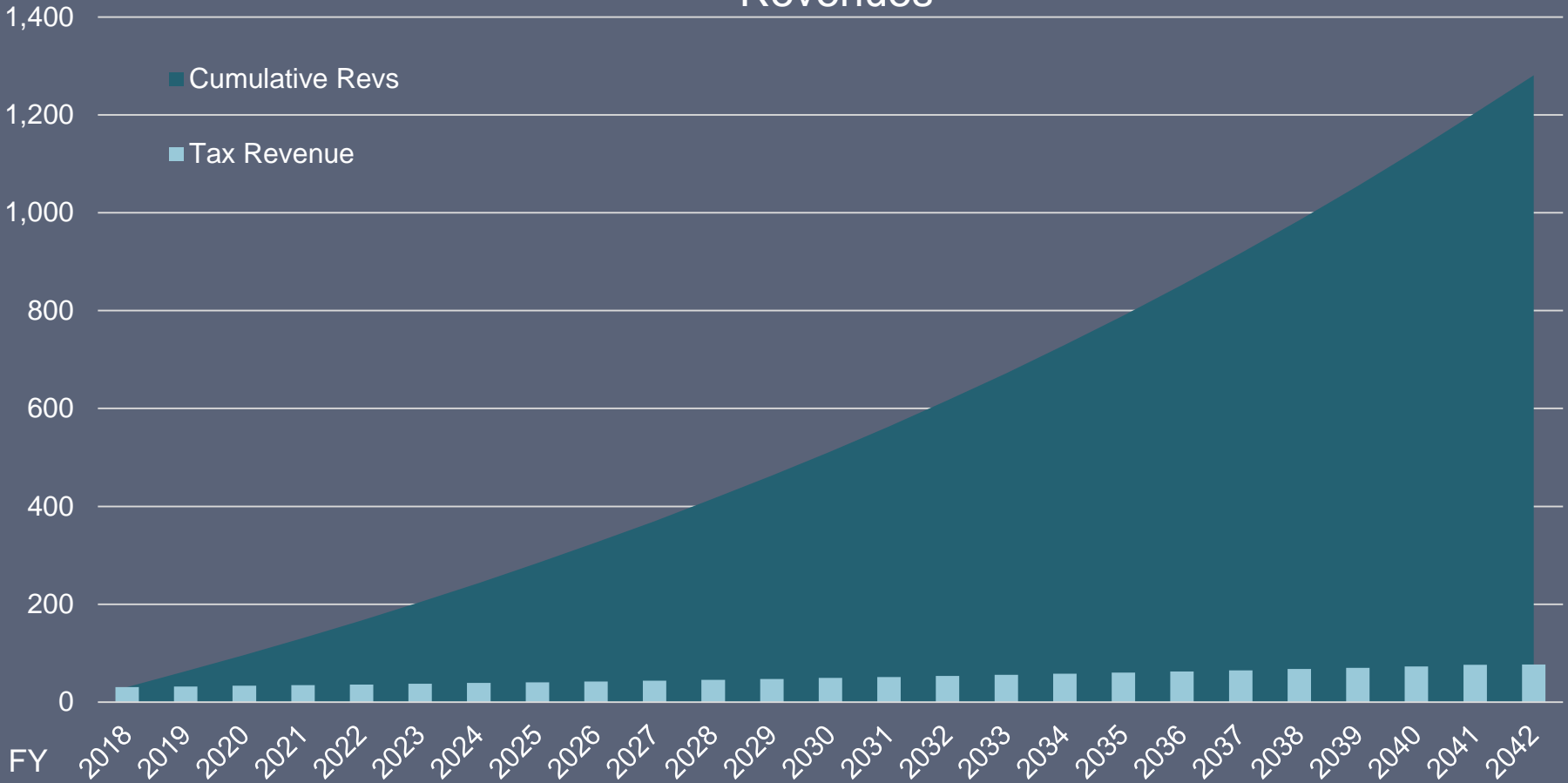
Every penny of the 2016 Sales Tax Referendum has been allocated.

This means that all of the \$2,100,000,000 has been programed to pay for:



## TST - Roads Revenues

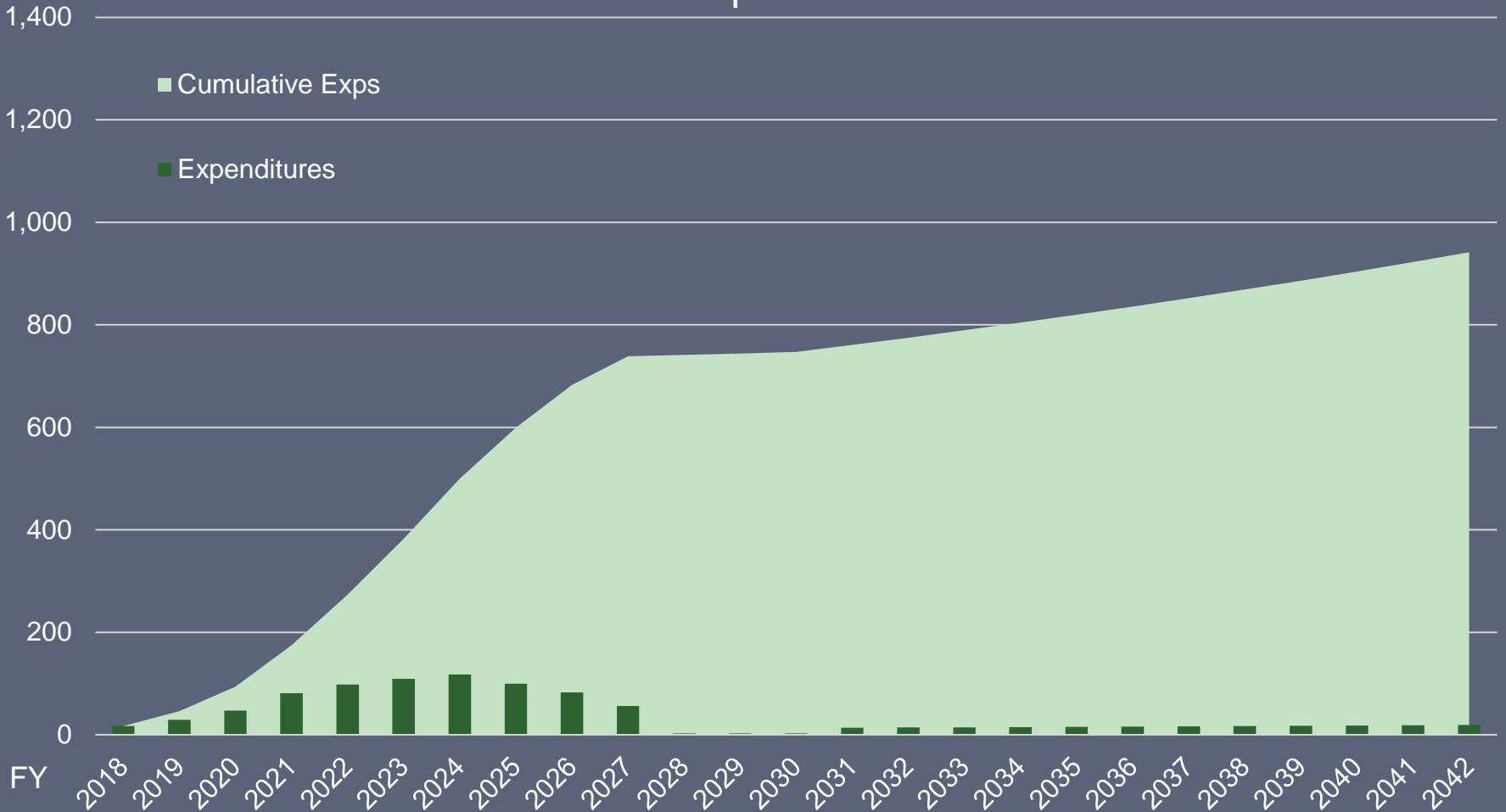
Millions of Dollars



Financial Forecast – When will we have the money?

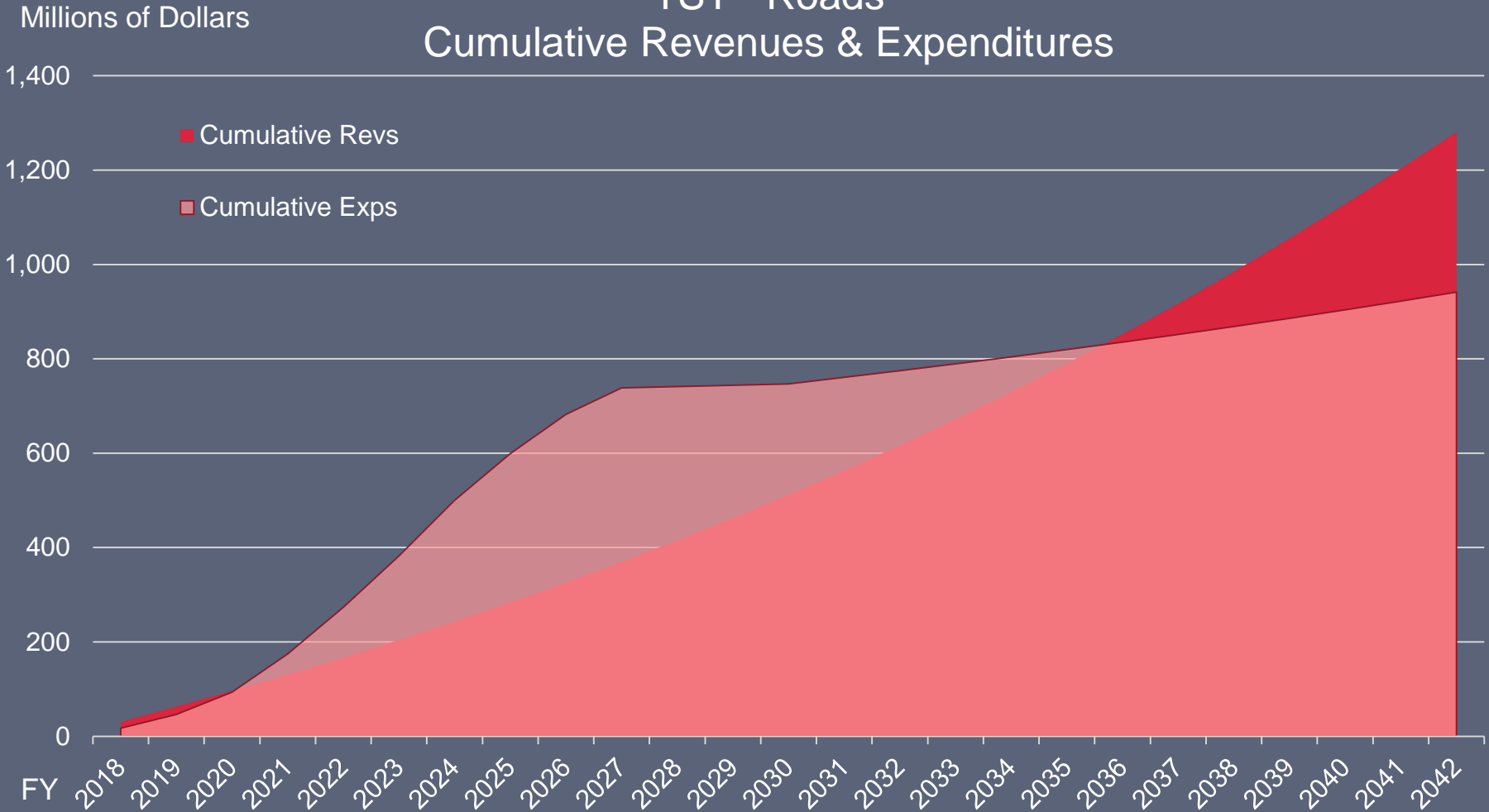
## TST - Roads Expenditures

Millions of Dollars



Expenditures Forecast – How much are we going to spend?

## TST - Roads Cumulative Revenues & Expenditures



Revenues and Expenditures – When do we borrow?

# Project Delivery

Starting a major transportation project is complex.



Three major tasks must be completed before construction can even begin:

- ✓ Local Public Agency – Allows for Federal Funding
- ✓ National Environmental Policy Act (NEPA)
- ✓ Design, Permitting, and Right of Way Acquisition

Construction is often the shortest component to a project.



# Project Management

## From Conception to Completion

LPA  
Request to  
Manage  
Project

Evaluation of  
LPA  
Qualifications

Identify  
Funding

Field Review  
& Scope  
Development

Development  
of  
Participation  
Agreement

Program  
Project

Execute  
Participation  
Agreement

Invoices &  
Payments

Advertise &  
Award of  
Const.  
Contracts

Encroachment  
Permit

Plans, Specs.,  
& Estimate Pkg.  
(PS&E)  
Approval

Right of Way  
Certification

Environmental  
Review  
(NEPA)

Plan  
Development

Construction

Inspection,  
Testing, &  
Material  
Certification

Final Inspection

Final Material  
Certification

Final  
Acceptance

LPA Project  
Evaluation

Project  
Documentation  
& Closure

# Steps Ahead

Once granted Local Public Agency Status



NEPA



Preliminary  
Design



Final  
Design

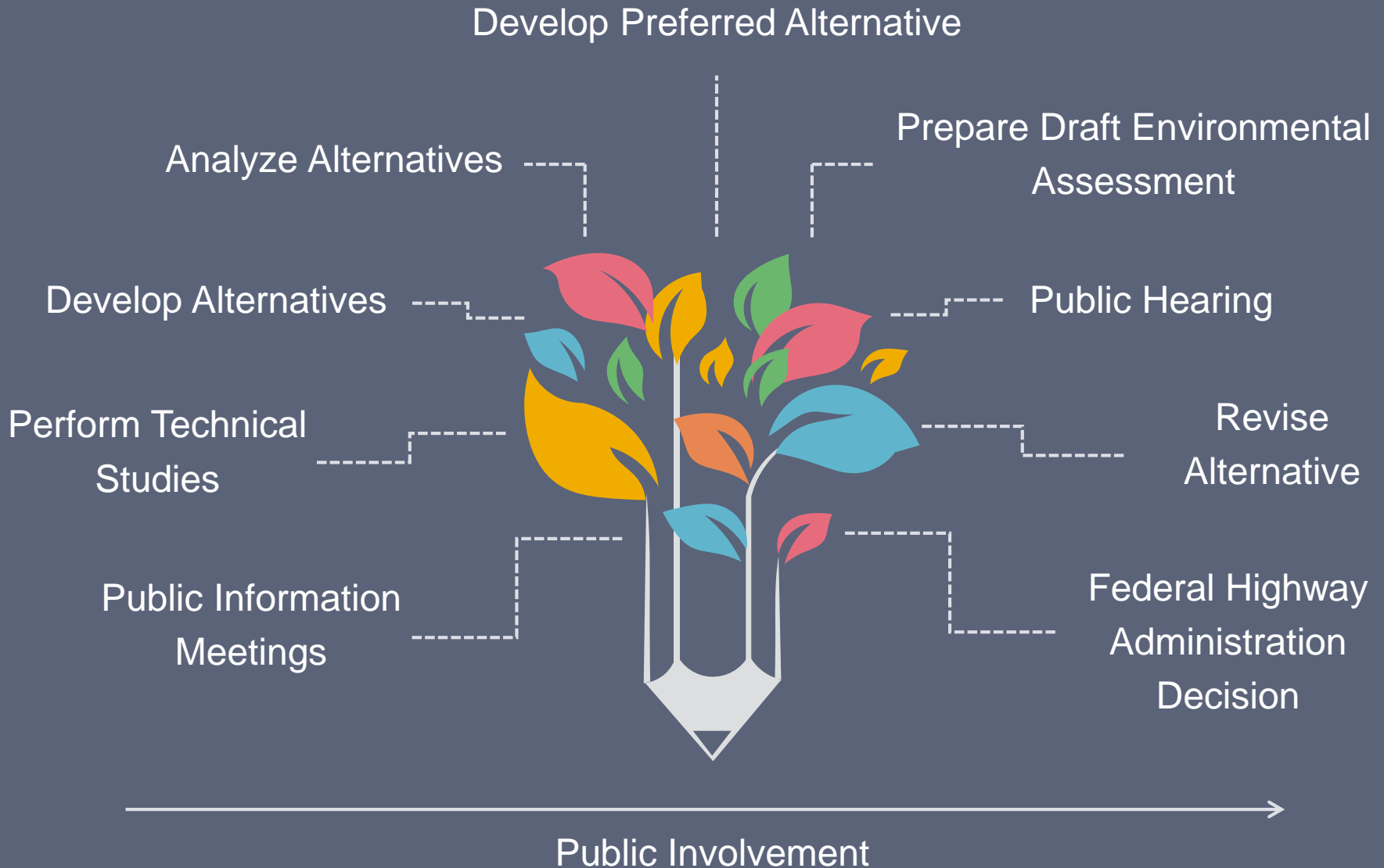


Right  
of  
Way



Construction

# National Environmental Policy Act Process



# Management Approach

## DESIGN AND NEPA PERMITTING

Performed by  
qualified firms  
selected through a  
RFP or RFQ Process.



## CONSULTANTS

Staff will hire limited  
consultants with  
specific areas of  
expertise.



## CONSTRUCTION DELIVERY

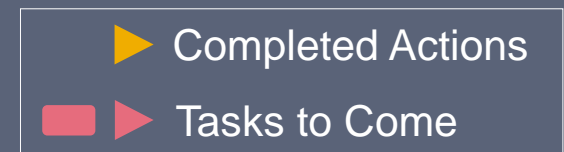
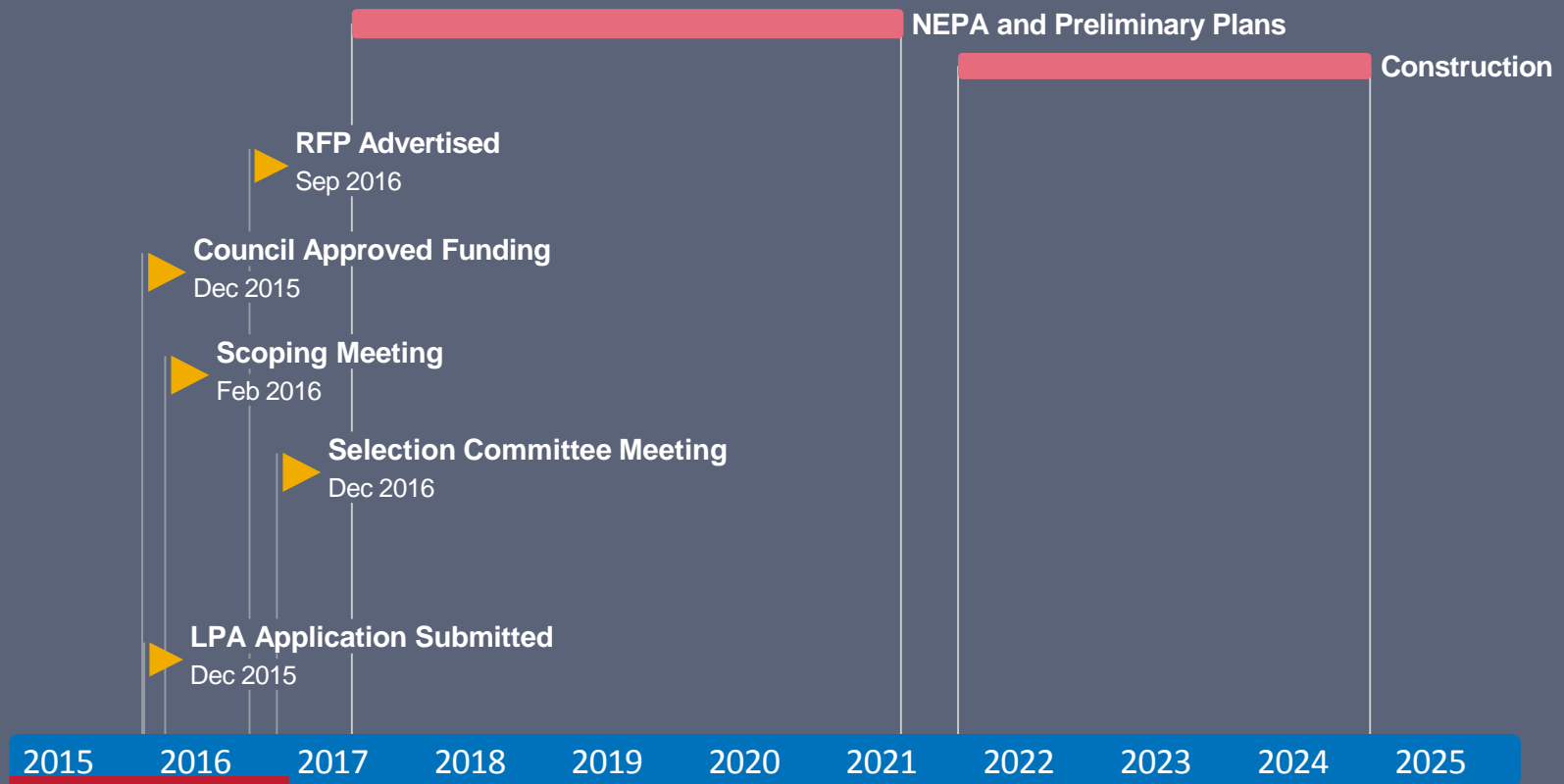
Design-Build or Design-Bid-Build to be determined as the permitting progresses and opportunities for innovation are identified.



# Where are we now?

Transportation Development has already gotten the ball rolling with the following projects:



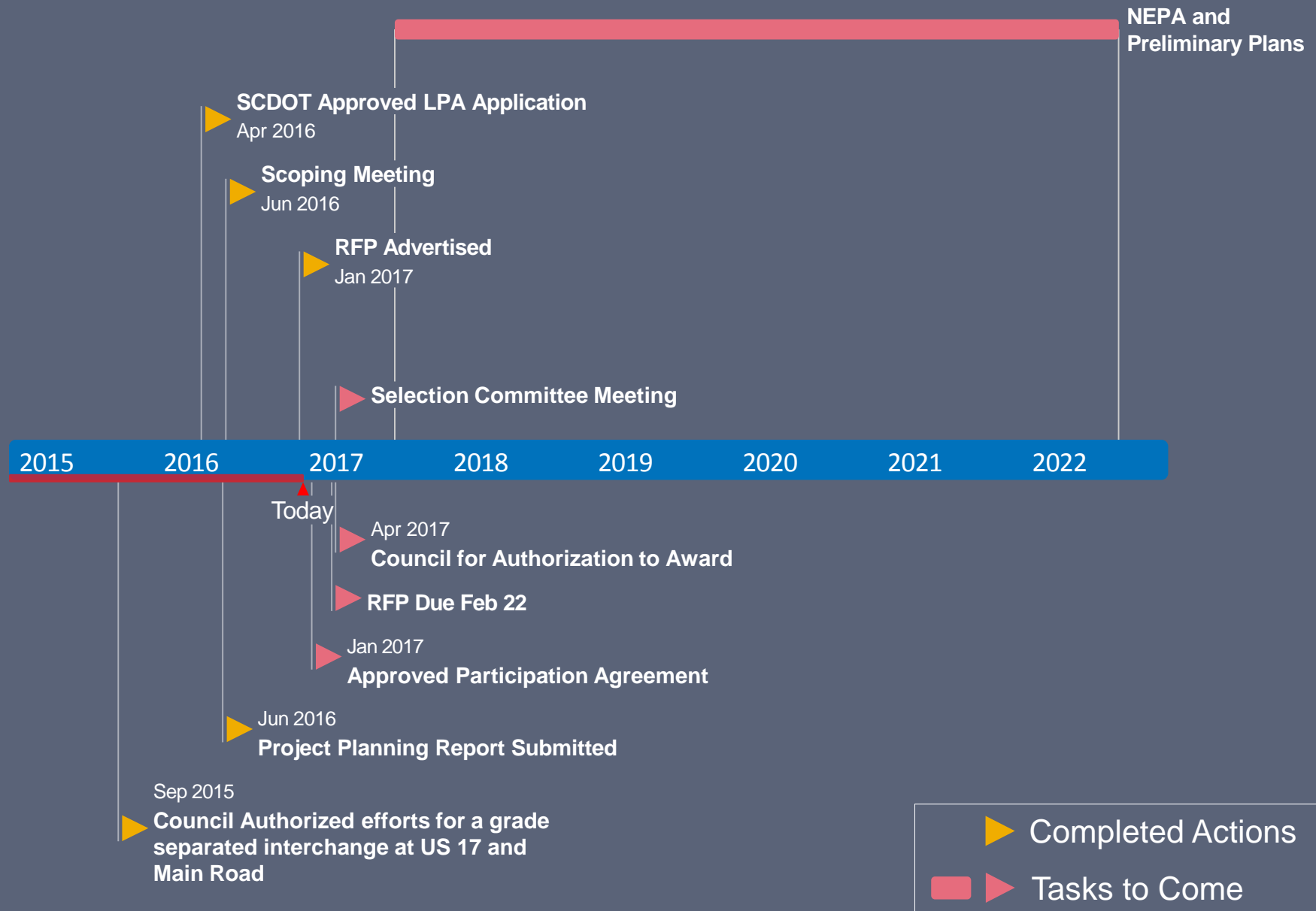


# SC 41 Improvements





Project Challenges



# US 17 at Main Road Improvements





Project Challenges

# Airport Area Infrastructure Improvements

## Program Overview



2009

Boeing 787  
Announcement



2010

Traffic Study &  
Program  
Planning



2013

County Council  
approves  
Special Source  
Revenue  
Bonds totaling  
\$80 Million



2014

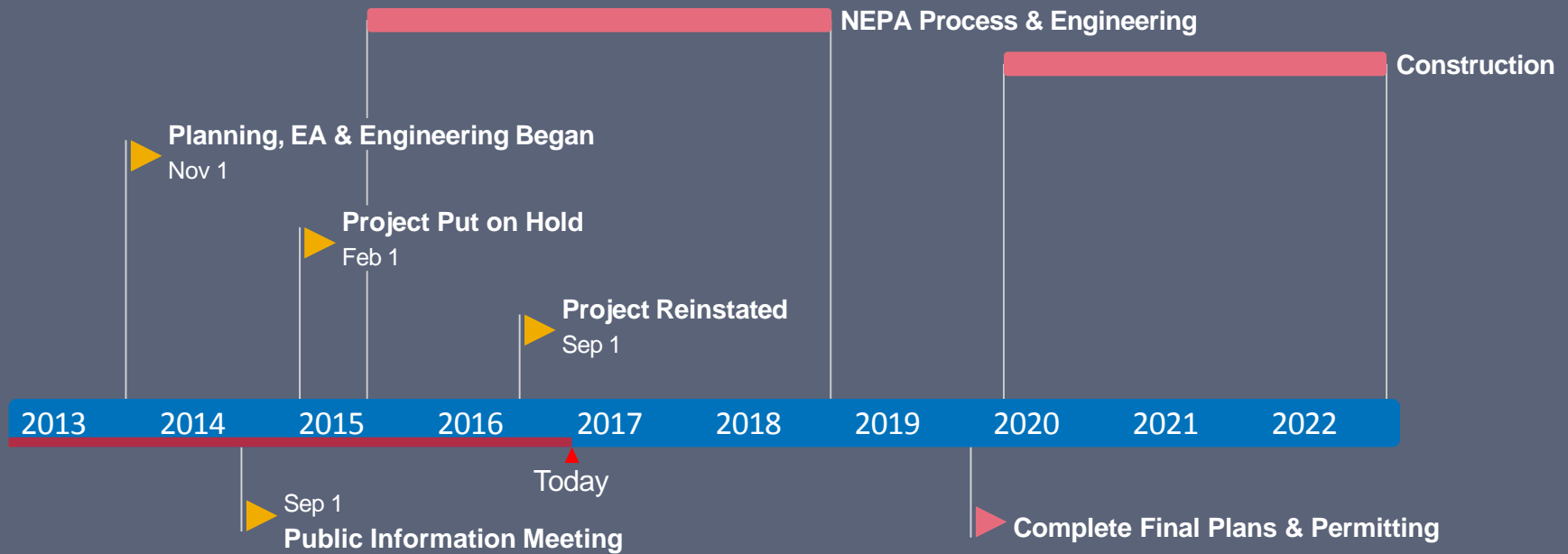
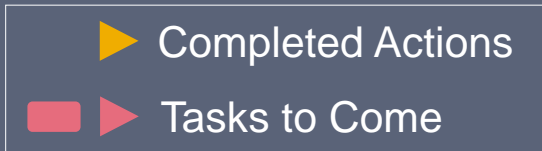
County begins  
Planning and  
Preliminary  
Engineering  
efforts & hosts  
Public  
Meetings for All  
3 Projects



2016

County ½ Cent  
Sales Tax  
Referendum  
Passes to  
Secure  
Commitments  
for all AAll  
Projects

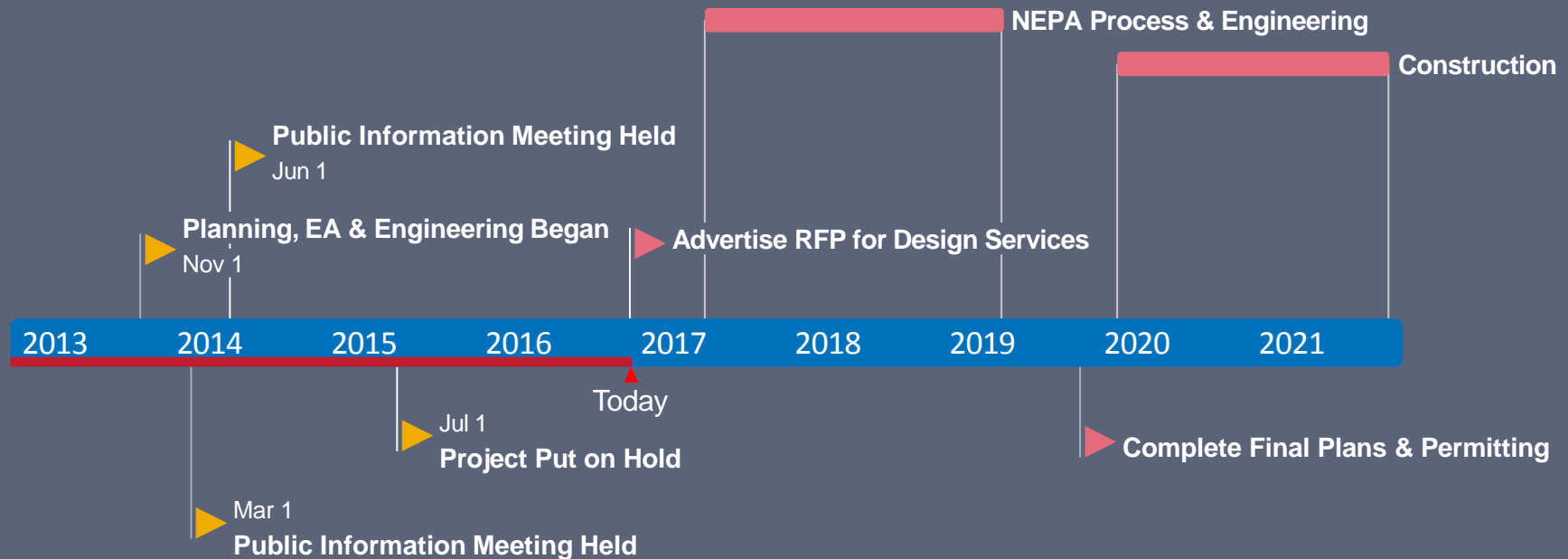
# Palmetto Commerce Interchange



# Airport Connector Road

▶ Completed Actions

▶ Tasks to Come

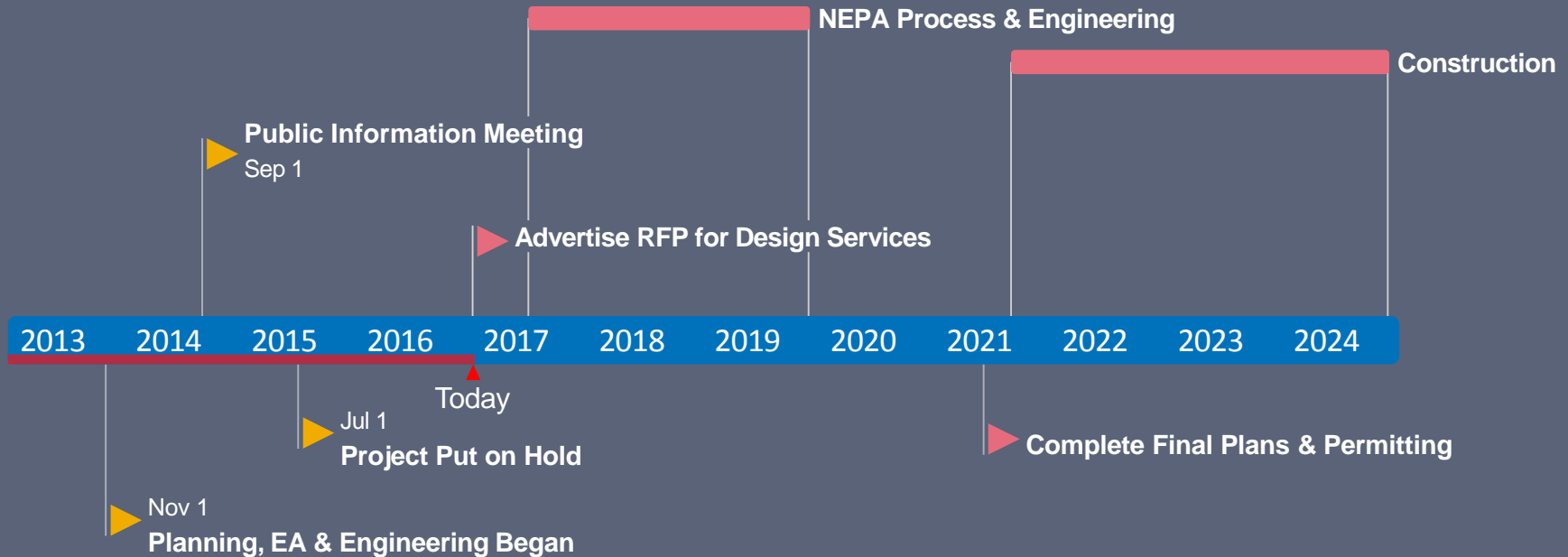




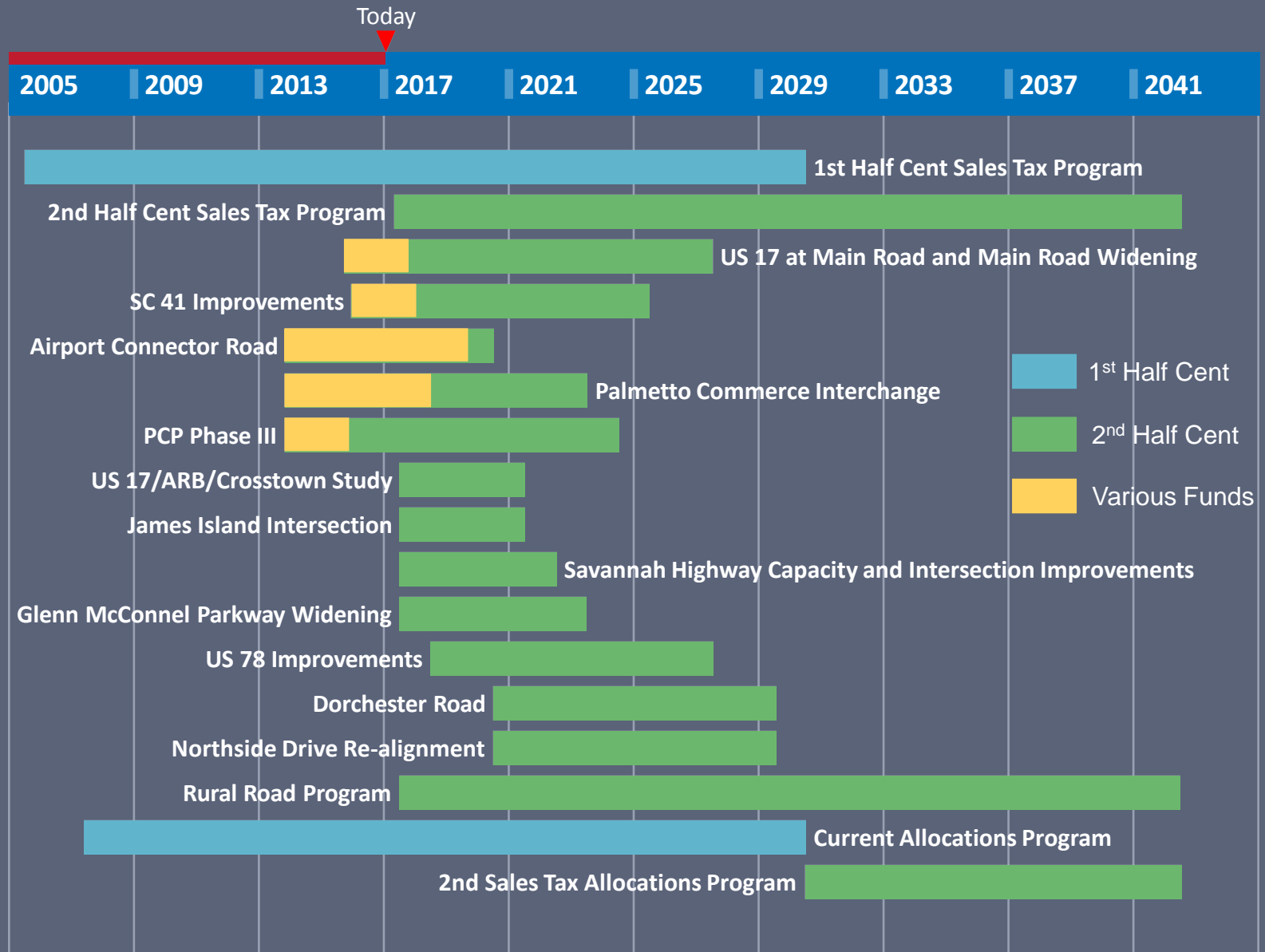
# Palmetto Commerce Parkway Phase III

▶ Completed Actions

▶ Tasks to Come

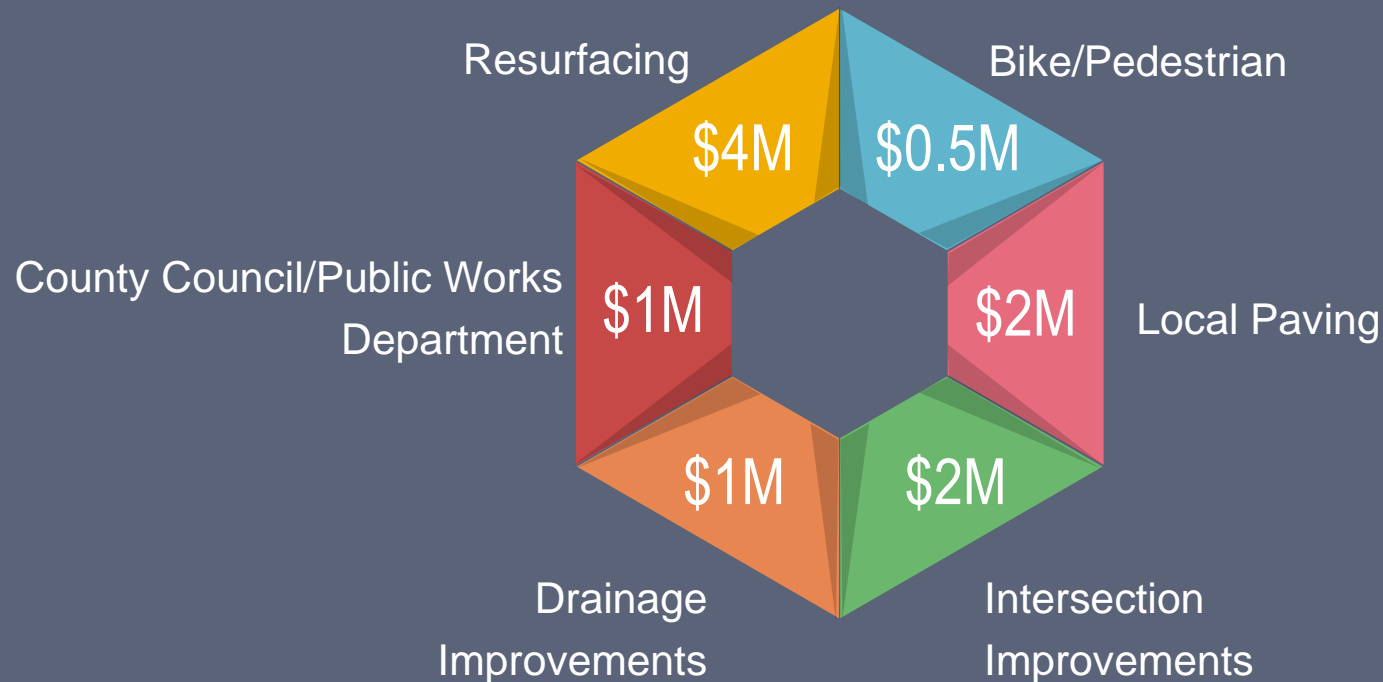


# 2<sup>nd</sup> Half Cent Project Outlook



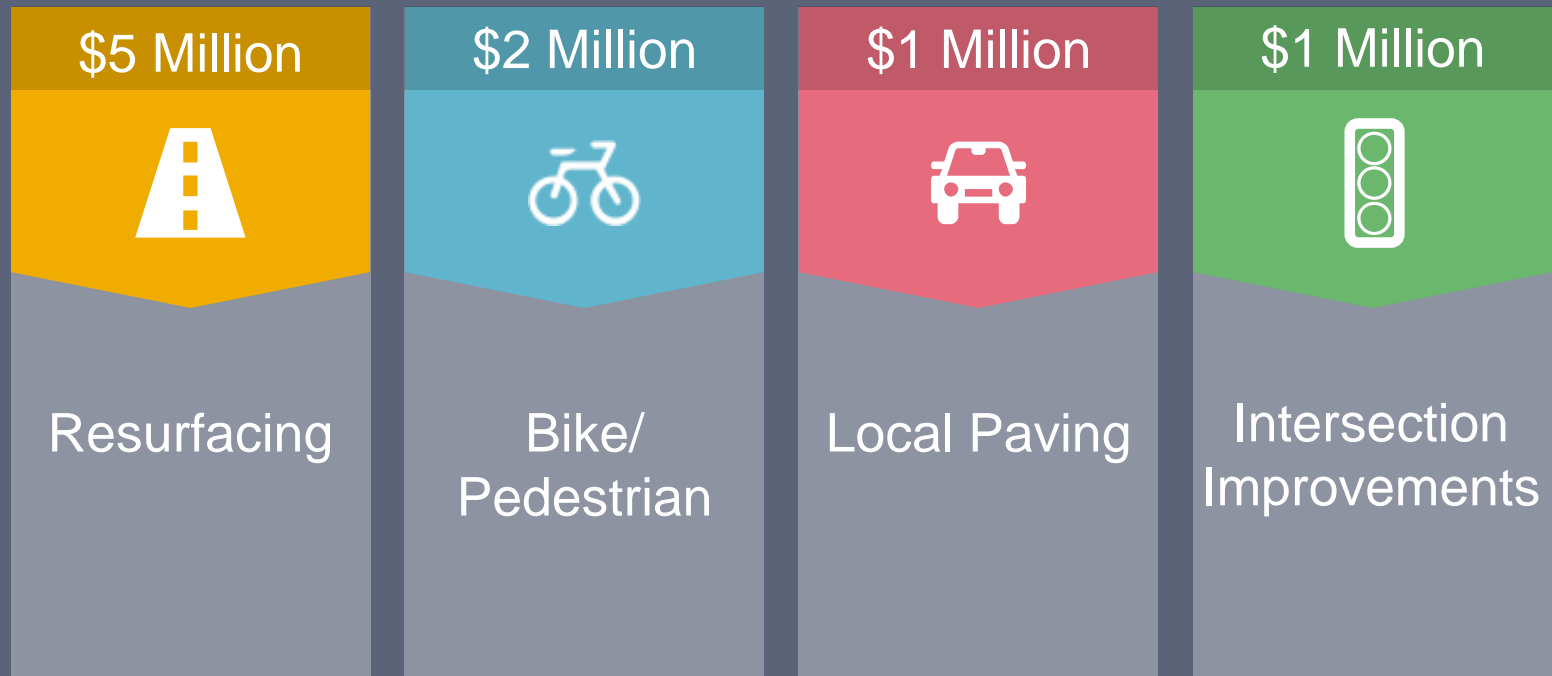
# Current Annual Allocation

Historically, county council has allocated \$10.5 million to the existing Annual Allocation program, which started in 2005 and runs for 25 years - until 2030.



# Annual Allocation Continuation

Beginning in 2031, the Allocation Program funding will continue at \$9 Million per year until 2042.





# Rural Road Improvements

\$2 million per year will be allocated for 25 years. Targets existing unpaved roads in rural Charleston County.

Improvements may include:



ROADSIDE DRAINAGE AND OUTFALLS



WIDENING/REALIGNMENT



INTERSECTION IMPROVEMENTS



TRAVEL SURFACE IMPROVEMENTS

- Rock
- Pavement

# Rural Road Improvements

## Public Works Department

- Score Roads for Prioritization
- ROW/Easement Acquisition
- Design/Permit Improvements
- Site Work Construction/Inspection

## Transportation Development Department

- Bid Process for Surface Improvements
- Project Management for Contracted Surface Improvements
- Construction Inspection for Contracted Surface Improvements

Council approved ranking methodology


Ongoing:

- Hollings Road
- Courtland/Dawning Community
- Stanwick Road
- Jeff Gaillard Road

Perform ranking evaluation (180 roads)

# Let's Review

 2016 Sales Tax Referendum Passes on November 8<sup>th</sup>.

 All of the incoming money from the 2<sup>nd</sup> Sales Tax has been allocated.

 Revenues and expenditures may not always be even.

 Major transportation projects are complex and take time.

 Not all projects can start at once.

 Annual Allocation.

 Rural Road Program.

# Thank you!



# Questions?