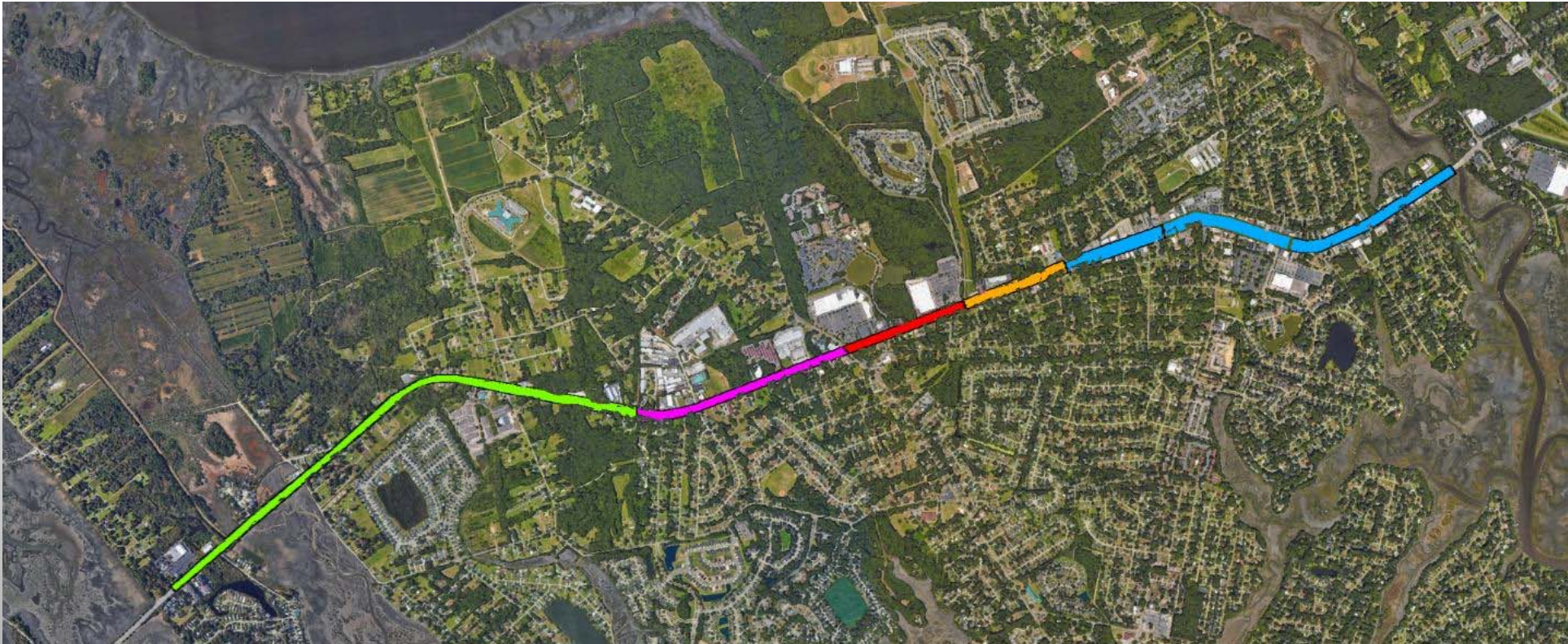


Initiating Rethink Folly

Conceptual Estimates

10/23/2017

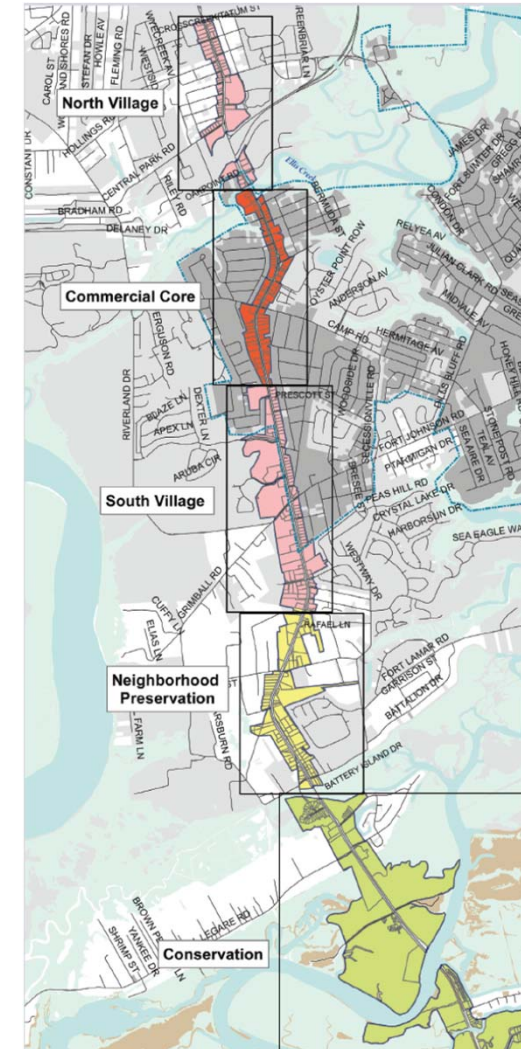


Source: Google Earth

Agenda

Initiating Rethink Folly | Conceptual Estimates

- **Cost Development Criteria**
- **Sectional Breakdown**
- **Cost Summary**



Cost Development Criteria

Initiating Rethink Folly | Conceptual Estimates

- **Focus on pedestrian/bike facilities on west side**
- **Estimates segmented based on existing facilities**
- **Estimates include such items as:**
 - Stormwater alterations along road
 - Relocating small power poles
 - Concrete sidewalks
 - Asphalt shared-use path
 - Additional Right-of-way
 - Design and permitting
 - Construction engineering and inspection
- **Estimates do not include items such as:**
 - Relocation of water, sewer, or gas mains
 - Relocation of large power transmission poles
 - Landscaping
 - Offsite or outfall drainage improvements



Source: Rethink Folly

October 23, 2017



Section Overview

Initiating Rethink Folly | Conceptual Estimates

Ellis Creek Bridge to Sol Legare Road



Source: Google Earth

Overall Length: 23,050LF

Municipalities: James Island, City of Charleston, Charleston County, and Folly Beach

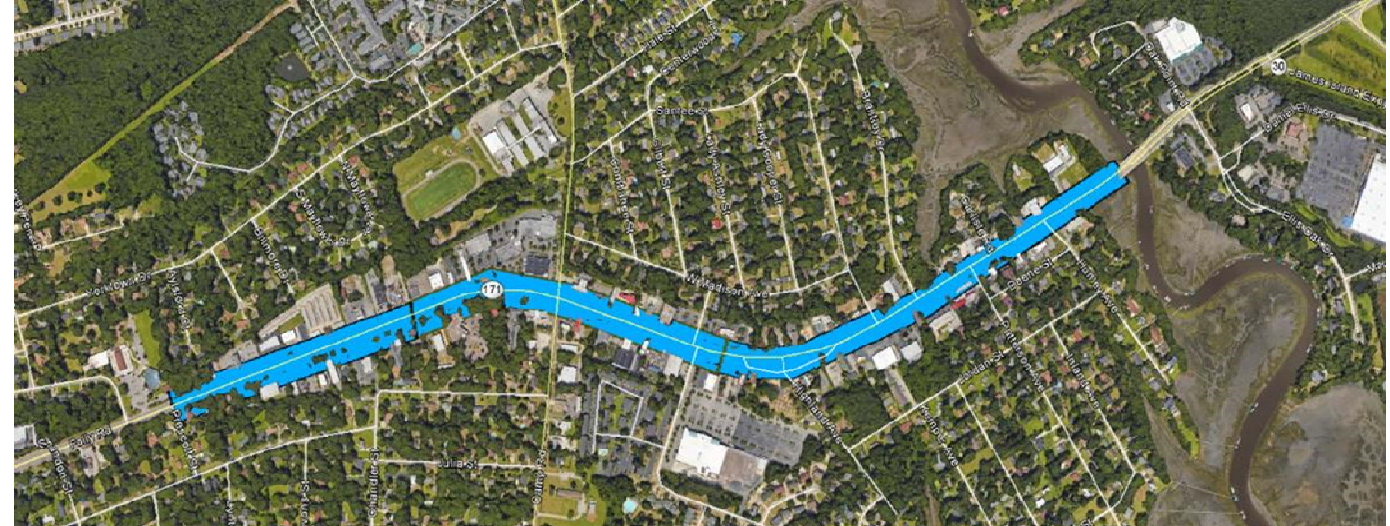
October 23, 2017



Section 1 - Ellis Creek to Prescott Street

Initiating Rethink Folly | Conceptual Estimates

- In the *Commercial Core*
- Bike lane exists for the entire length
- Sidewalks are scarce except for those being added as part of the Camp-Folly project
- Conceptual Alternatives:
 - New 5' sidewalk (filling in the gaps)
 - 12' shared-use path
- Cost to Improve:
 - Sidewalk: \$2.3M
 - Shared-Use Path: \$5.3M



Section Length: 6,800LF

Municipalities: James Island w/ City of Charleston @ Prescott St.



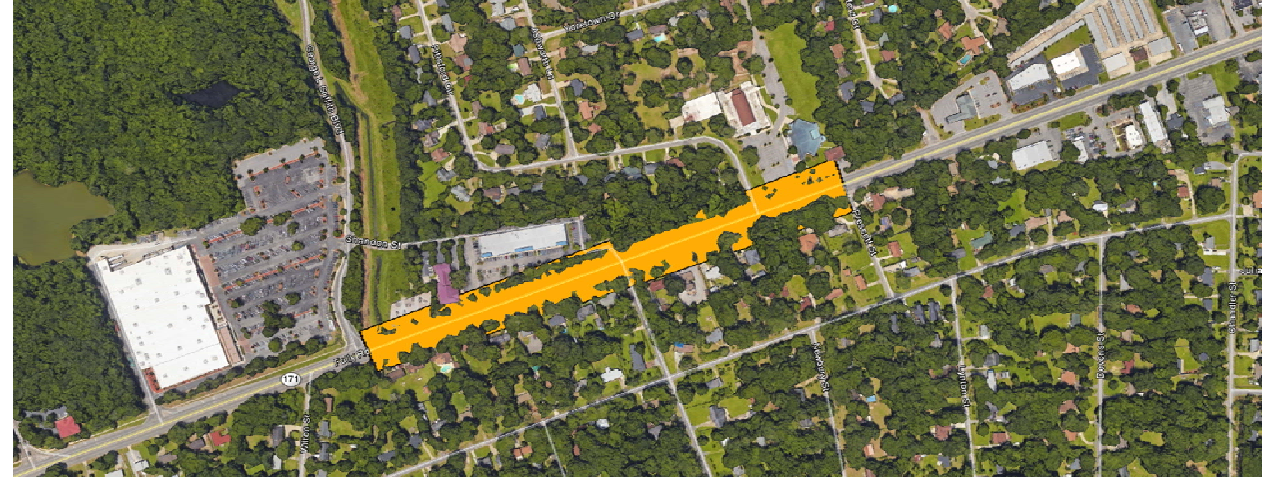
October 23, 2017



Section 2: Prescott Street to George L. Griffith Blvd

Initiating Rethink Folly | Conceptual Estimates

- In the *South Village*
- Existing bike lane along the entire length
- Existing 4' sidewalk at Queensborough Plaza and South State Bank
- Conceptual Alternatives:
 - Replace 4' sidewalk with new 5' sidewalk and infill sidewalk
 - Add 12' shared-use path (narrowed as needed)
- Cost to Improve:
 - Sidewalk: \$1.6M
 - Shared-Use Path: \$2.2M



Section Length: 1,800LF

Municipalities: City of Charleston with some James Island



October 23, 2017



Section 3 - George L. Griffith Blvd to Grimball/Fort Johnson Road

Initiating Rethink Folly | Conceptual Estimates

- In the *South Village*
- No bike lane for the entire length
- 5' to 6' sidewalk exists for entire length
- Conceptual Alternatives:
 - Replace sidewalk with 12' shared-use path (narrowed as needed)
- Cost to Improve:
 - Sidewalk: N/A
 - Shared-Use Path: \$1.6M



Section Length: 2,050LF

Municipalities: 50/50 James Island & City of Charleston



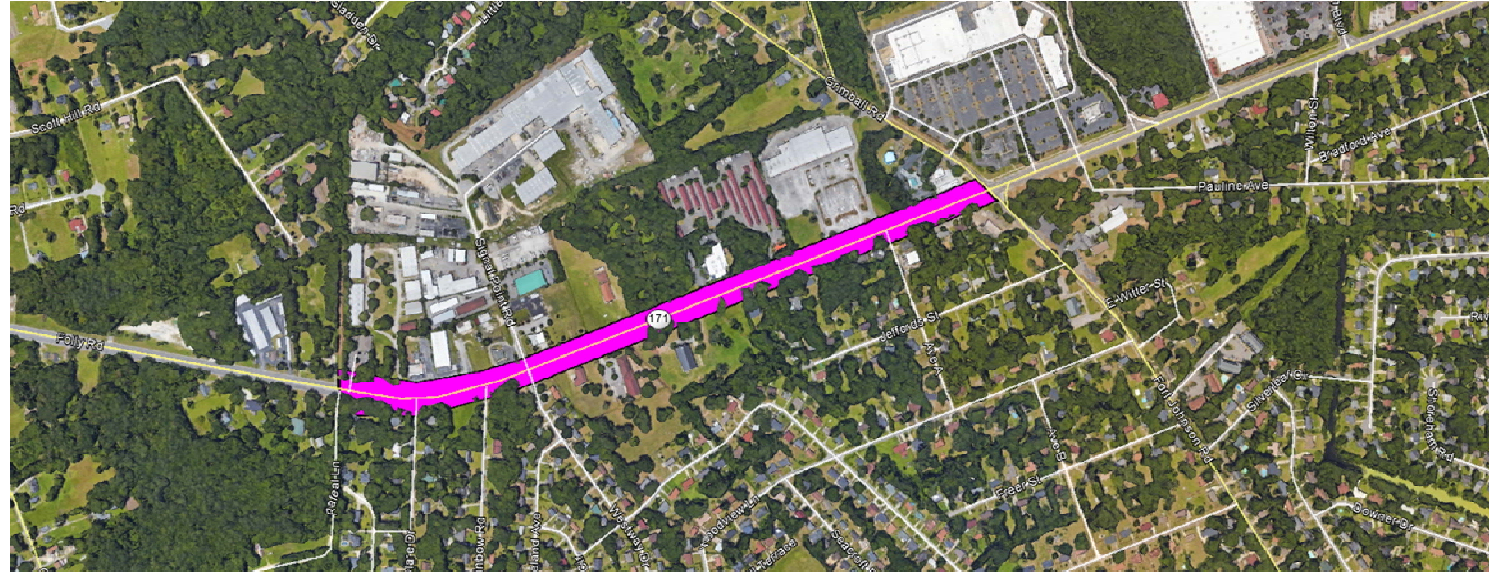
October 23, 2017



Section 4 – Grimball/Fort Johnson Road to Rafeal Lane

Initiating Rethink Folly | Conceptual Estimates

- In the *South Village*
- No bike lane or sidewalks exist
- Conceptual Alternatives:
 - Add enclosed stormwater system and 12' shared-use path (narrowed as needed)
- Cost to Improve:
 - Sidewalk: N/A
 - Shared-Use Path: \$2.5M



Section Length: 3,600LF

Municipalities: City of Charleston, some James Island, and some CHS County



October 23, 2017



Section 5 – Rafeal Lane to Sol Legare Road

Initiating Rethink Folly | Conceptual Estimates

- In the *Neighborhood Preservation*
- Bike lane exists for the entire length
- Conceptual Alternatives:
 - Add 5' sidewalk & enclosed stormwater system
 - Add 12' shared-use path (narrowed as needed) & enclosed stormwater system.
- Cost to Improve:
 - Sidewalk: \$2.3M
 - Shared-Use Path: \$4.3M



Section Length: 8,800LF

Municipalities: CHS County, City of Charleston, and Folly Beach



October 23, 2017



Cost Summary

Initiating Rethink Folly | Conceptual Estimates

Section	Length	Sidewalk Completion	Shared-Use Path
1	6,800'	\$2.3M*	\$5.3M*
2	1,800'	\$1.6M	\$2.2M
3	2,050'	----	\$1.6M
4	3,600'	----	\$2.5M
5	8,800'	\$2.3M	\$4.3M
Total =	23,050'	\$10.3M**	\$15.9M

*Prices do not include changes to the Camp Folly Project.

** Includes the shared-use path cost where sidewalk is not proposed.

- Total length – 4.37 Miles
 - Current Potential Funding Sources:
 - BCDCOG: \$6.9M
 - Charleston County: \$2.0M
 - James Island: \$0.4M
 - Other Sources: \$???M
- Total = \$9.3M



Source: Google Earth

October 23, 2017



