



RETHINK FOLLY NEXT STEPS

CONTENTS

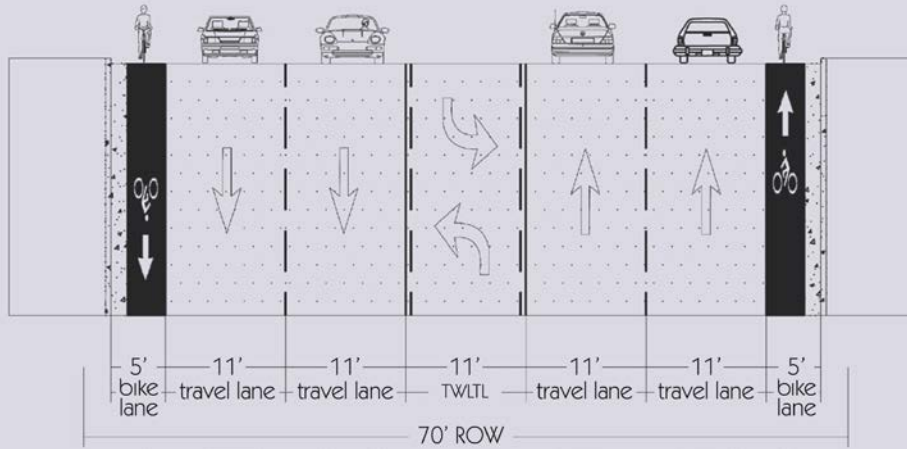
- 1  *Rethink Folly* Review
- 2  Review of Funding
- 3  Folly Road Segment Review
- 4  Cost Estimates Inclusions & Exclusions
- 5  Rethink Folly Guidepost 1
- 6  Population, Density, & Businesses
- 7  Rethink Folly Next Steps



RETHINK FOLLY; SEGMENT 1

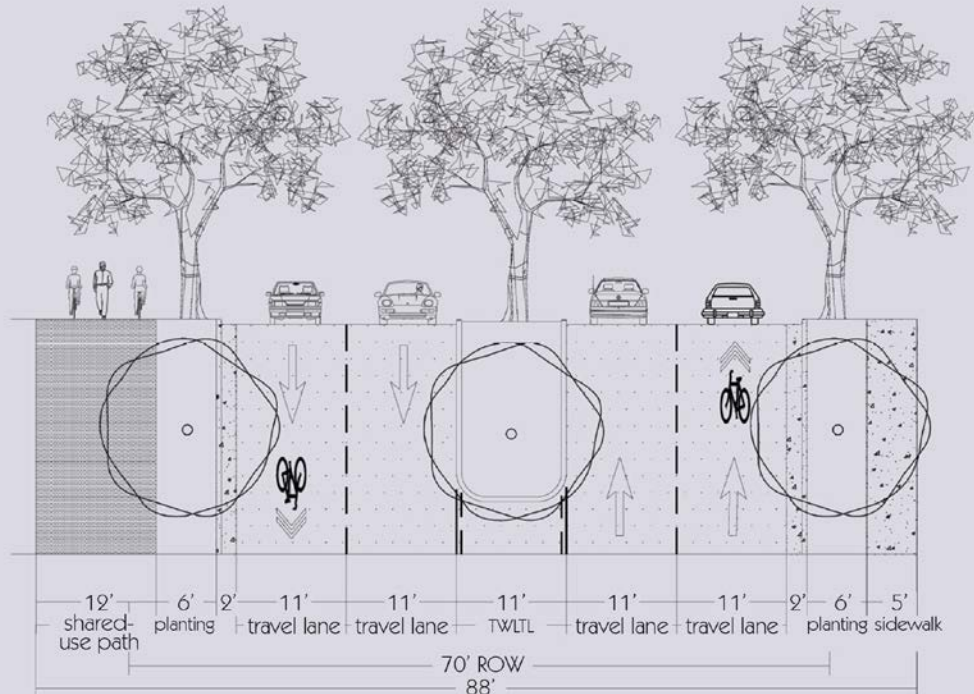
Segment 1

Existing
Street
Section
From Ellis
Creek to
Prescott St.



Segment 1

Better
Street
Section
From Ellis
Creek to
Prescott St.



AASHTO Definitions

Shared-use Path

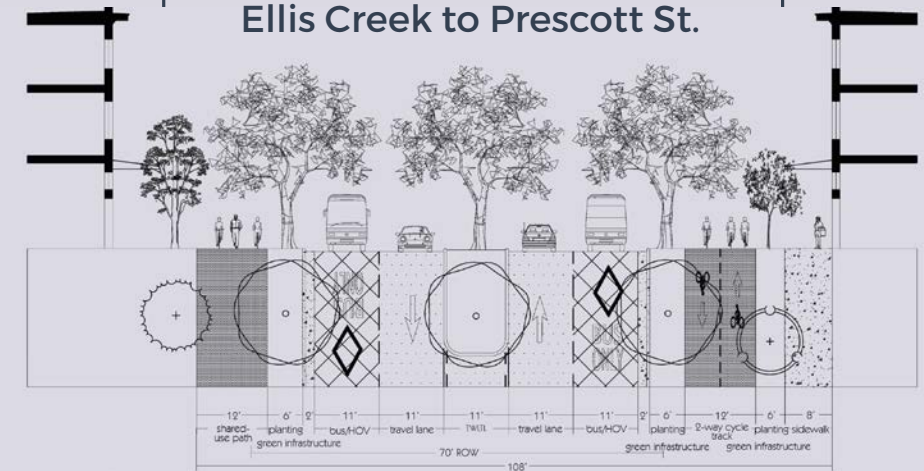
- 12' preferred width
- 10' minimum width
- 5' travel lane separation

Sidewalk

- 5' preferred width
- ADA-compliant

Segment 1

Best Street Section from
Ellis Creek to Prescott St.



FUNDING



\$ 400,000

provided by the City of Charleston; available in 2019



\$ 400,000

provided by the Town of James Island; available now



\$ 1,500,000

provided by CHATS (BCDCOG)



\$ 375,000

provided by Charleston County; Council-approved 20% match of federal funds

TOTAL AVAILABLE FUNDS

\$ 2.675M

TARGETED POTENTIAL FUNDING

(\$ 5.4M)	CHATS Complete Streets
(\$ 1.375M)	Charleston County
(TBD)	Additional Municipal Contributions
(TBD)	SCDOT

TOTAL AVAILABLE + TARGETED FUNDS

\$ 9.450M

3

SEGMENT REVIEW

TOTAL AVAILABLE FUNDS

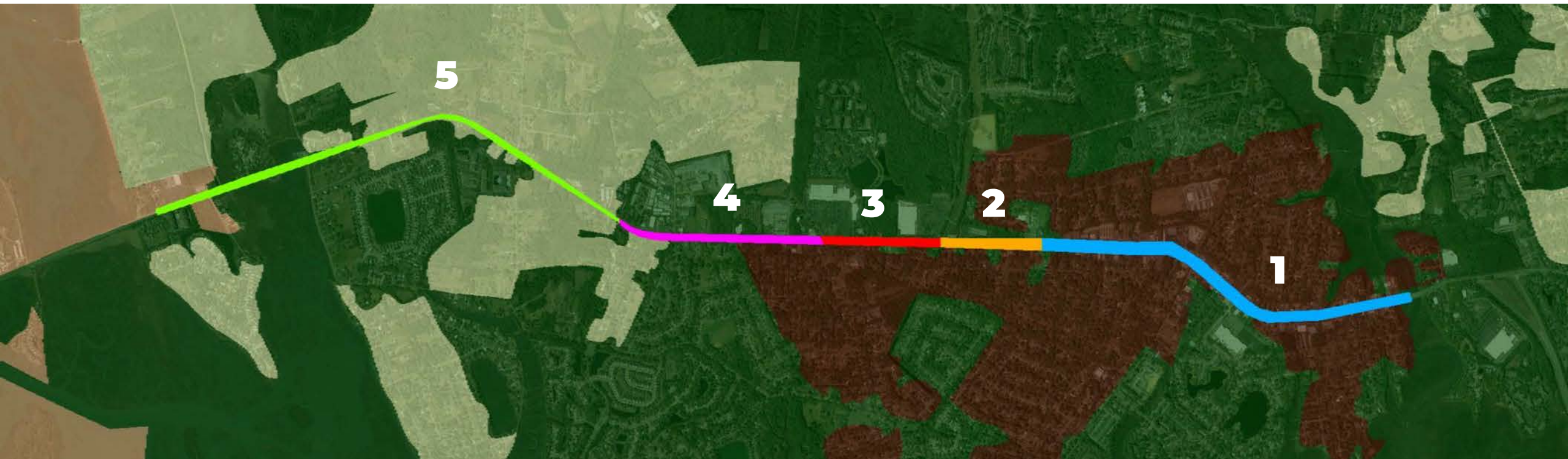
\$ 2.675M

TOTAL AVAILABLE + TARGETED FUNDS

\$ 9.450M

Section	Roads	Length	Cost of Sidewalk Completion	Cost of Shared-Use Path
1	Ellis Creek to Prescott Street	6,800'	\$ 2.3M	\$ 5.3M
2	Prescott Street to George L. Griffith Boulevard	1,800'	\$ 1.0M	\$ 2.2M
3	George L. Griffith Blvd to Grimball/Fort Johnson Road	2,050'	----	\$ 1.6M
4	Grimball/Fort Johnson Road to Rafeal Lane	3,600'	----	\$ 2.5M
5	Rafeal Lane to Sol Legare Road	8,800'	\$ 2.3M	\$ 4.3M
Total		23,050'	\$ 9.7M	\$ 15.9M

City of Charleston Folly Beach James Island Charleston County



INCLUSIONS

- Facilities on West side of Folly Road
- Estimates based on aerial photos and limited site visits
- Concrete Sidewalks
- For shared-use path alternative, bike lane was removed and curb line was moved toward travel lane
- Asphalt shared-use path
- Additional right of way included (\$40/sf)
- Design and permitting fees
- Construction engineering and inspection
- Bus shelters along segments 3, 4, and 5
- Small distribution power line relocation

EXCLUSIONS

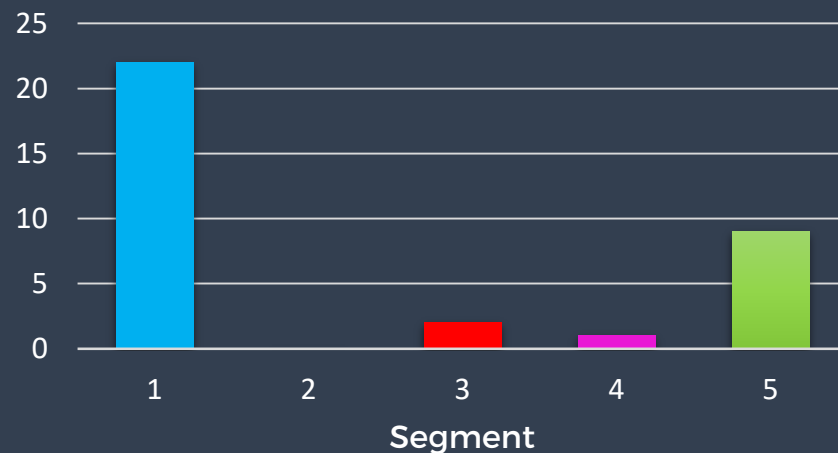
- Below-ground utility relocations (ex: water, sewer, or gas)
- Major transmission line relocations
- Landscaping
- Major offsite or drainage improvements
- Pervious surfaces
- Stormwater treatment

RETHINK FOLLY GUIDEPOST 1

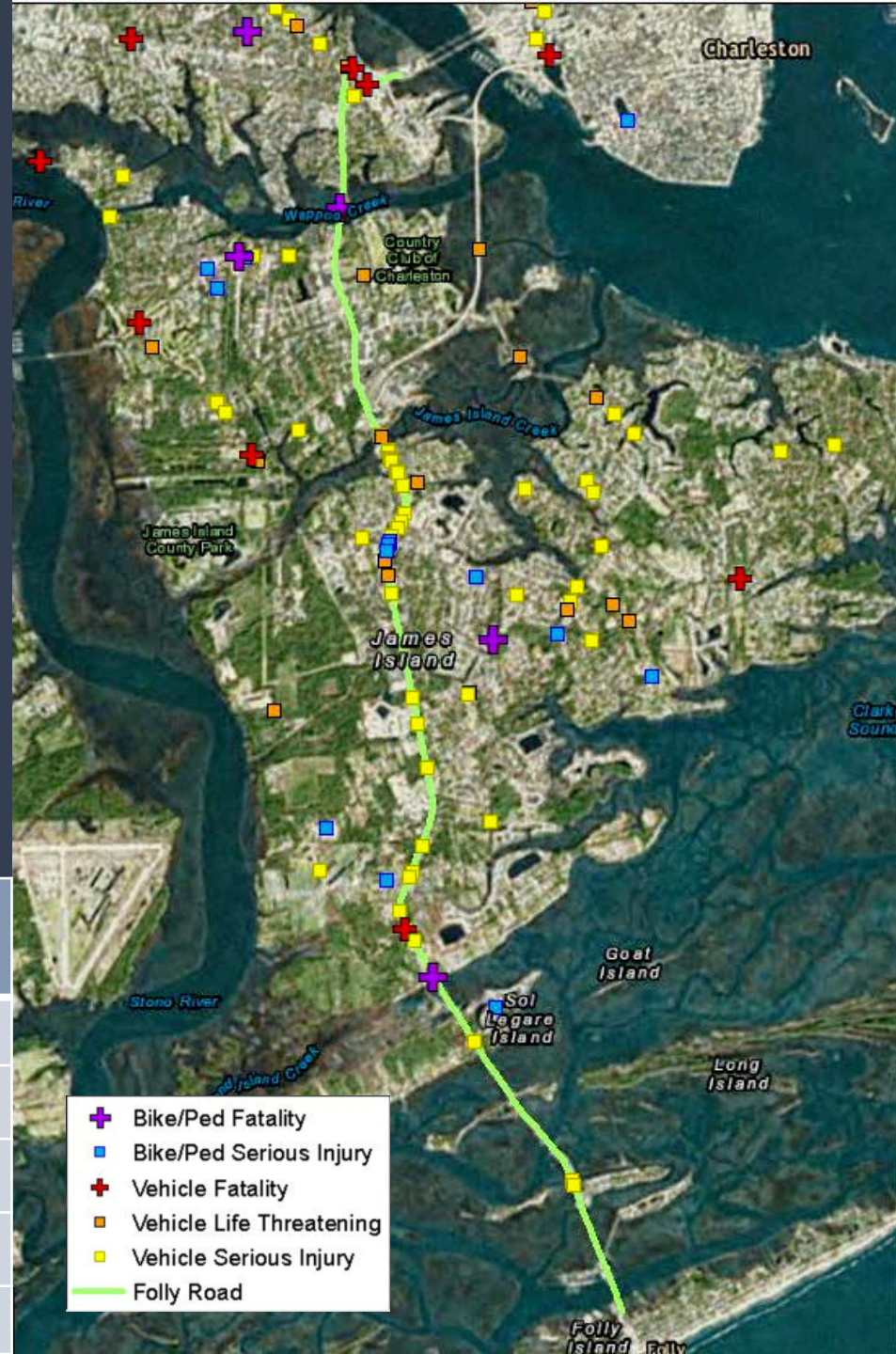
Improvements that make all of Folly Road a safe, appealing, and desirable place to walk, ride bicycles, use transit, and drive.

TOTAL ACCIDENTS

2014, 2015, 2016



Segment	Roads	Bike/Ped Fatality	Bike/Ped Serious Injury	Vehicle Fatality	Vehicle Life Threatening	Vehicle Serious Injury	Total Accidents
1	Ellis Creek to Prescott Street	0	3	0	4	15	22
2	Prescott Street to George L. Griffith Boulevard	0	0	0	0	0	0
3	George L. Griffith Blvd to Grimball/Fort Johnson Road	0	0	0	0	2	2
4	Grimball/Fort Johnson Road to Rafeal Lane	0	0	0	0	1	1
5	Rafeal Lane to Sol Legare Road	1	0	1	0	7	9

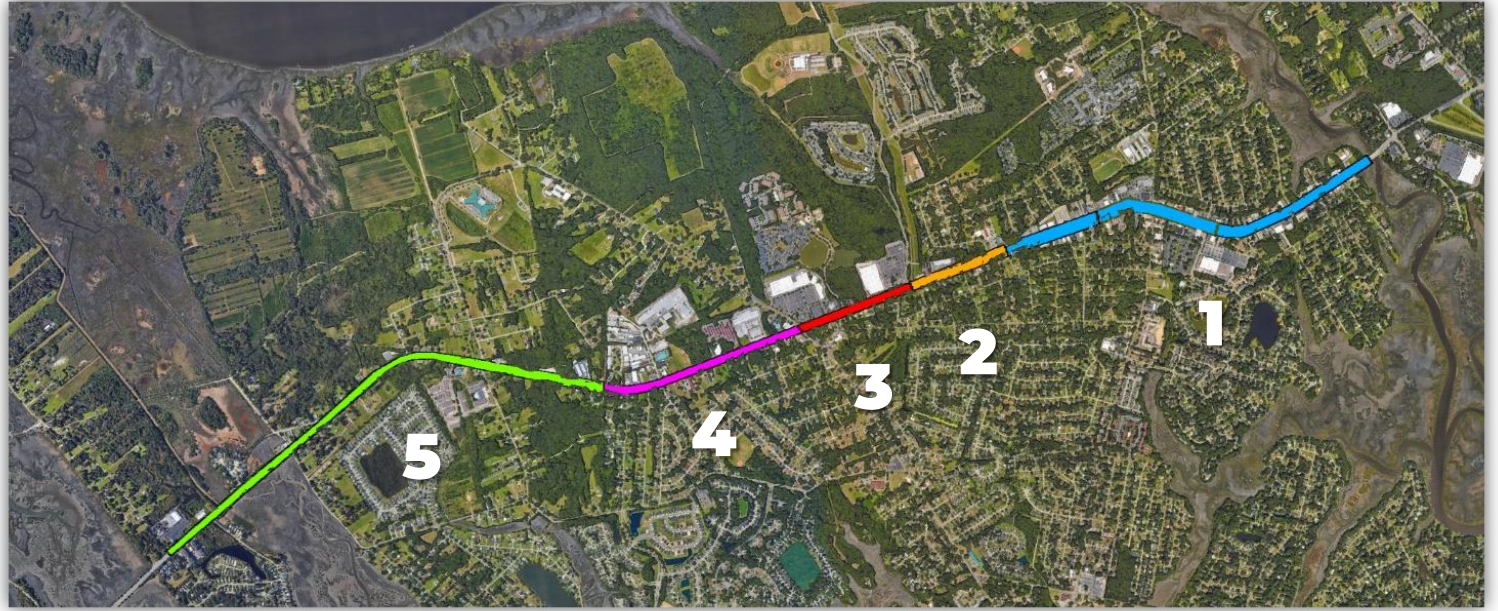


6

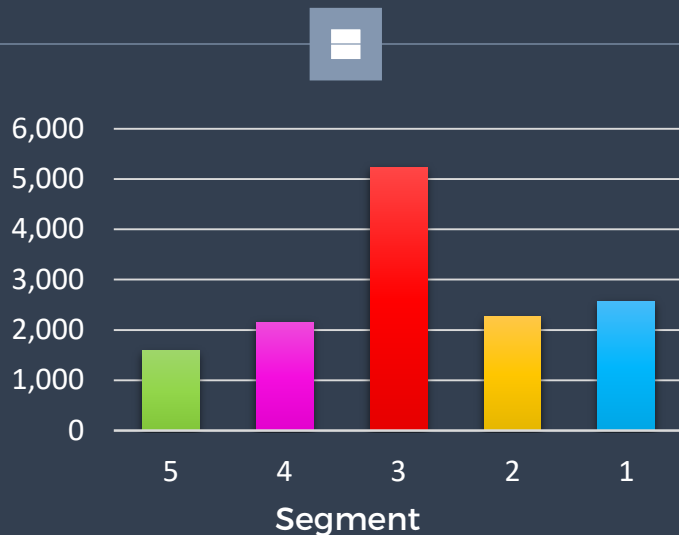
POPULATION, DENSITY, & BUSINESSES

Data represents a half-mile
section on either side of
Folly Road

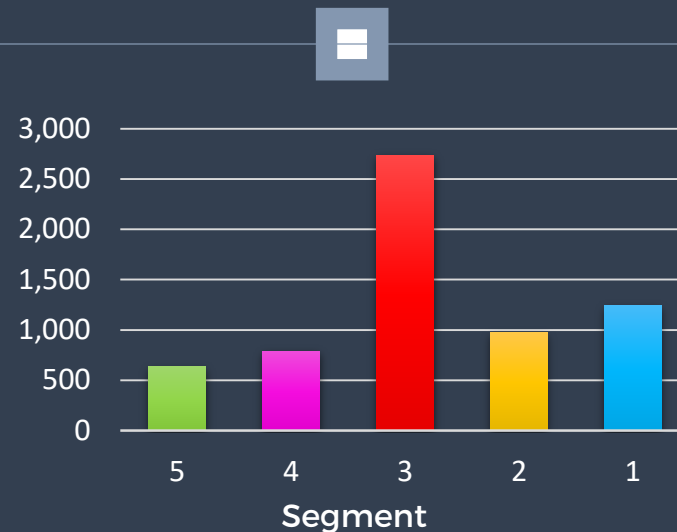
prepared by BCDCOG according to
ESRI forecast for 2017 from 2010
census data



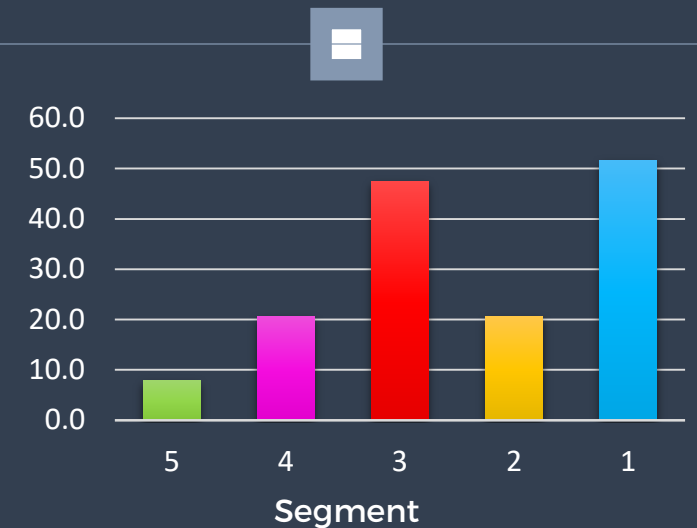
POPULATION DENSITY
(population/square mile)



HOUSEHOLD DENSITY
(households/square mile)



BUSINESS DENSITY
(businesses/square mile)



NEXT STEPS

**DEFINE
THE
SCOPE**

**DEFINE
PHASE I**

**PERFORM
STORMWATER
ANALYSIS**

**DEFINE
ALTERNATIVES TO
INVESTIGATE**

Infill sidewalk

Move curb and replace with 12'
shared-use path

Leave bike path and build a wide
sidewalk

Others

