

FOLLY ROAD MULTI-USE PATH

Ellis Creek to Prescott Street



CONTENTS

- Review
- Alternatives
- Challenges
- Areas of Interest
- Decision Matrix
- Recommendation



REVIEW

SEGMENT OPTIONS

Section	Roads	Length	Cost of Sidewalk Completion	Cost of Shared-Use Path
1	Ellis Creek to Prescott Street	6,800'	\$ 2.3M	\$ 5.3M
2	Prescott Street to George L. Griffith Boulevard	1,800'	\$ 1.0M	\$ 2.2M
3	George L. Griffith Blvd to Grimball/Fort Johnson Road	2,050'	----	\$ 1.6M
4	Grimball/Fort Johnson Road to Rafeal Lane	3,600'	----	\$ 2.5M
5	Rafeal Lane to Sol Legare Road	8,800'	\$ 2.3M	\$ 4.3M
Total		23,050'	\$ 9.7M	\$ 15.9M

WHAT WE'VE DONE

- Grant application for funding
- Defined first priority
- Completed existing condition survey
- Developed alternatives

FUNDING

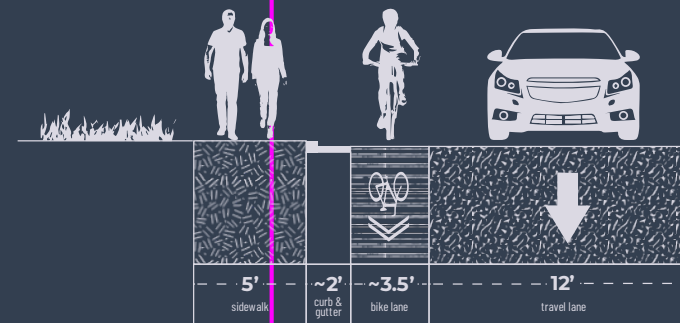
\$2.675M	\$ 9.450M
TOTAL AVAILABLE FUNDS	TOTAL TARGETED + AVAILABLE FUNDS

SEGMENT 1

MOST traffic accidents (2015-2017)	MOST business density
2nd household density	2nd population density

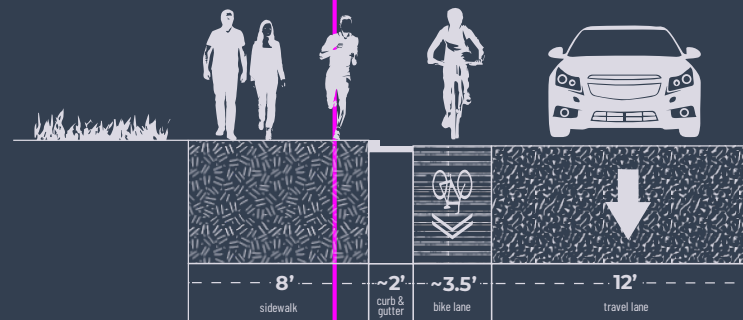
ALTERNATIVES

— ROW Line



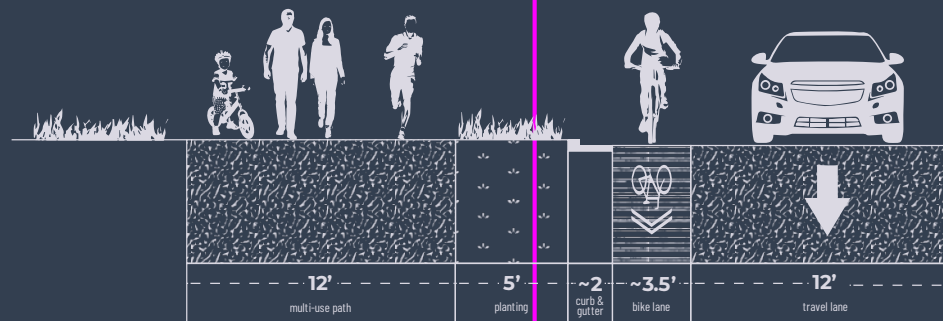
ALT
1

5' Sidewalk



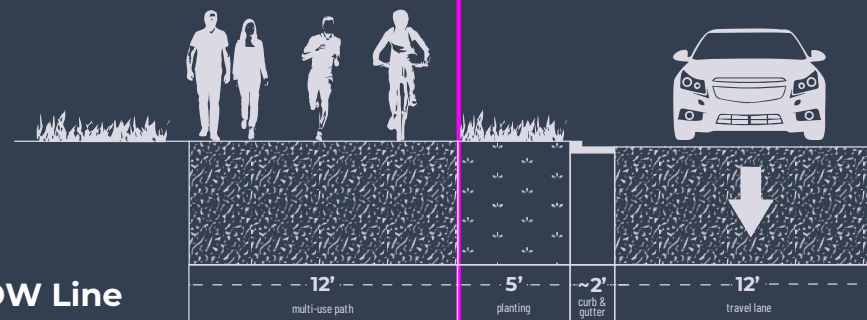
ALT
2

8' Sidewalk



ALT
3

Multi-Use Path
+ Bike Lane



ALT
4

Multi-Use Path,
No Bike Lane

CHALLENGES

The image shows a construction site on a road. In the foreground, there are several orange and white striped traffic barrels. A concrete curb is visible, separating the road from a dirt area. In the background, there are more traffic barrels, a white truck, and several cars. A sign for 'TACO BELL' is visible in the distance. The word 'CHALLENGES' is overlaid in large, bold, black letters.

RIGHT-OF-WAY



- Before 1962 Folly Road was two lanes with a 50' ROW, then SCDOT expanded to a ~70' ROW
- Generally 35' feet along the west side of Folly Road
 - 32.5' pavement
 - 1.5' curb & gutter
- Approximate cost of ROW purchase = \$40/sq ft

UTILITIES/STORMWATER



- Utility poles are a major challenge along the corridor for each alternative
- There will not be a significant impact on below ground utilities
- Telephone pedestals, gas monuments, backflow preventers would need to be relocated
- Existing site drainage would be impacted for 3 businesses
- Eliminating existing bike lane requires upgrades to Folly Road drainage system

MONUMENTS/SIGNAGE

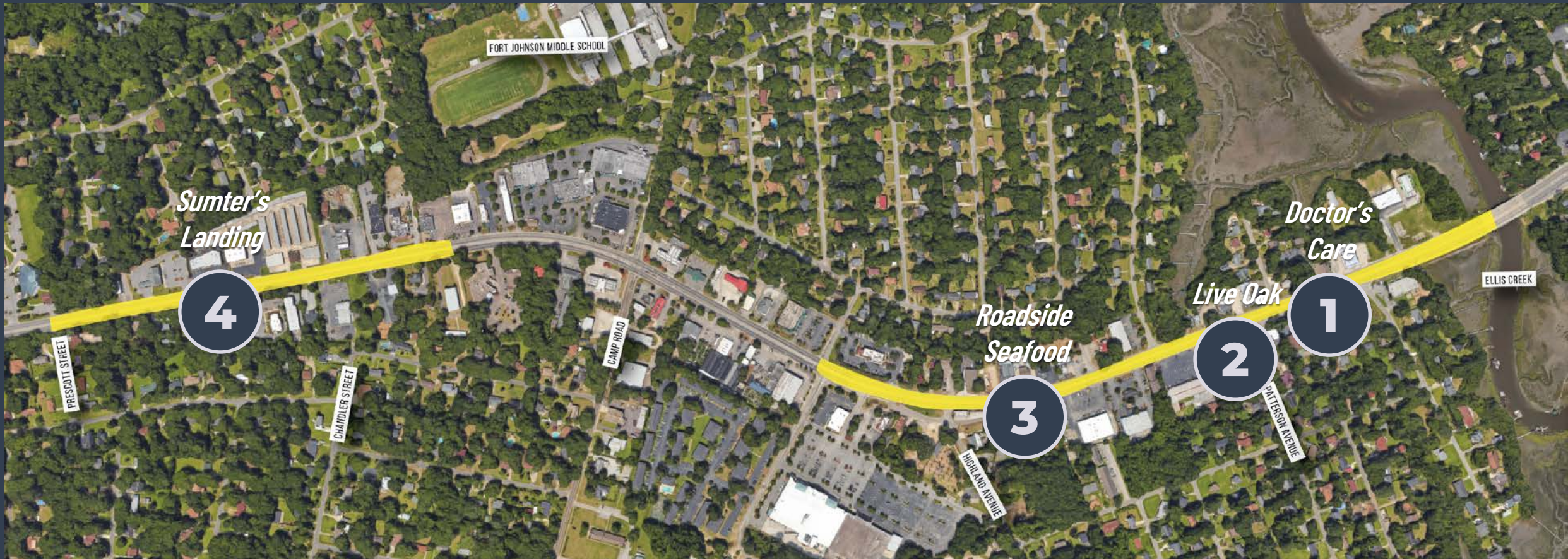


- Most businesses along Folly Road have signs that are typically at ROW edge
- Signs are expensive and difficult to relocate
- Relocation Costs:
 - Monuments signs: \$10,000
 - Post signs: \$5,900
 - Traffic signs: \$500

SEGMENT 1

Ellis Creek to Prescott Street

Areas of Interest



SEGMENT 1

Ellis Creek to Prescott Street

Doctor's Care





5' Sidewalk

Doctor's Care



Existing Conditions



5' Sidewalk

ALT
2

8' Sidewalk

Doctor's Care



Existing Conditions



8' Sidewalk

ALT
3

Multi-Use Path + Bike Lane

Doctor's Care



Existing Conditions



Multi-Use Path + Bike Lane



Multi-Use Path, No Bike Lane

Doctor's Care



Existing Conditions

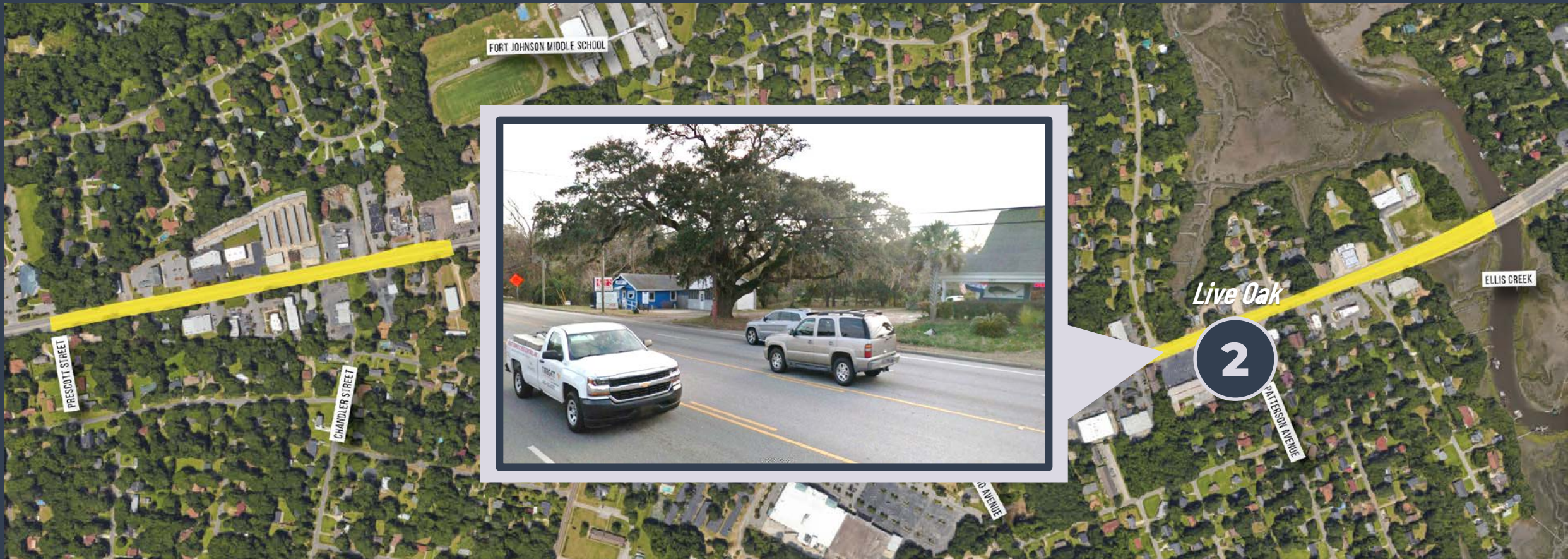


Multi-Use Path, No Bike Lane

SEGMENT 1

Ellis Creek to Prescott Street

Live Oak Tree





5' Sidewalk

Live Oak Tree



Existing Conditions



5' Sidewalk

ALT
2

8' Sidewalk

Live Oak Tree



Existing Conditions



8' Sidewalk

ALT
3

Multi-Use Path + Bike Lane

Live Oak Tree



Existing Conditions



Multi-Use Path + Bike Lane



Multi-Use Path, No Bike Lane

Live Oak Tree



Existing Conditions



Multi-Use Path, No Bike Lane

SEGMENT 1

Ellis Creek to Prescott Street

Roadside Seafood





5' Sidewalk

Roadside Seafood



Existing Conditions



5' Sidewalk

ALT
2

8' Sidewalk

Roadside Seafood



Existing Conditions



8' Sidewalk

ALT
3

Multi-Use Path + Bike Lane

Roadside Seafood



Existing Conditions



Multi-Use Path + Bike Lane



Multi-Use Path, No Bike Lane

Roadside Seafood



Existing Conditions



Multi-Use Path, No Bike Lane

SEGMENT 1

Ellis Creek to Prescott Street

Sumter's Landing





5' Sidewalk

Sumter's Landing



Existing Conditions



5' Sidewalk

ALT
2

8' Sidewalk

Sumter's Landing



Existing Conditions



8' Sidewalk

ALT
3

Multi-Use Path + Bike Lane

Sumter's Landing



Existing Conditions



Multi-Use Path + Bike Lane



Multi-Use Path, No Bike Lane

Sumter's Landing



Existing Conditions



Multi-Use Path, No Bike Lane

DECISION MATRIX

SEGMENT 1

Ellis Creek to Prescott Street

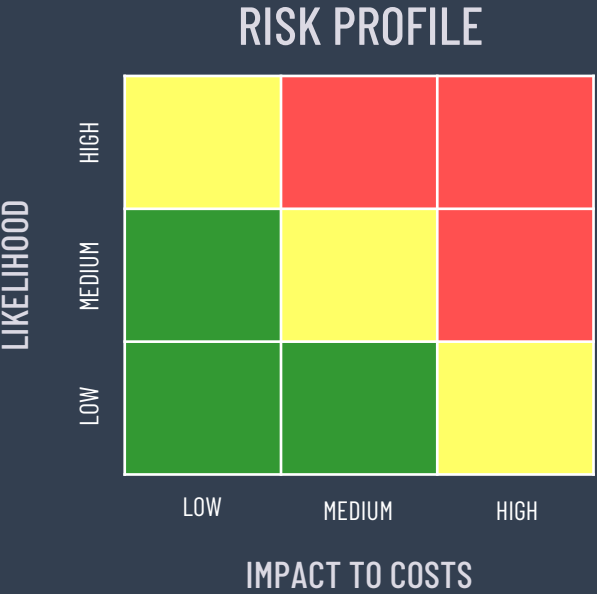


		CHALLENGE			
		ROW	UTILITIES/ STORMWATER	MONUMENTS/ SIGNAGE	COST ESTIMATE
ALT 1	5' Sidewalk	<div></div>	<div></div>	<div></div>	
ALT 2	8' Sidewalk	<div></div>	<div></div>	<div></div>	
ALT 3	Multi-Use Path + Bike Lane	<div></div>	<div></div>	<div></div>	
ALT 4	Multi-Use Path No Bike Lane	<div></div>	<div></div>	<div></div>	

DECISION MATRIX

SEGMENT 1

Ellis Creek to Prescott Street

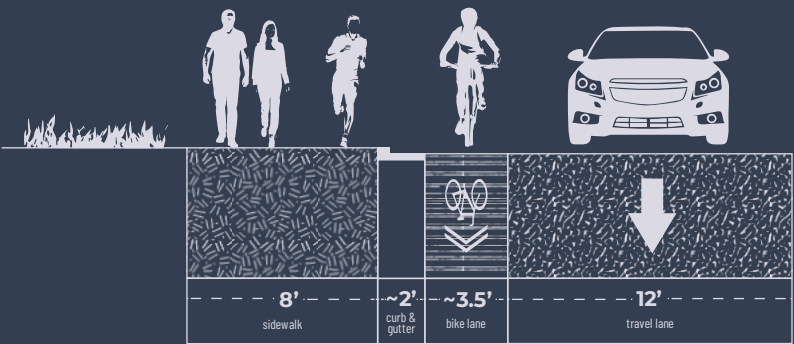


		CHALLENGE			
		ROW	UTILITIES/ STORMWATER	MONUMENTS/ SIGNAGE	COST ESTIMATE
ALT 1	5' Sidewalk				\$ 978,162
ALT 2	8' Sidewalk				\$ 1,425,196
ALT 3	Multi-Use Path + Bike Lane				\$ 3,294,520
ALT 4	Multi-Use Path No Bike Lane				\$ 4,006,201

RECOMMENDATION

ALT
2

8' Sidewalk





REVEER
GROUP

engineering • design • innovation

